

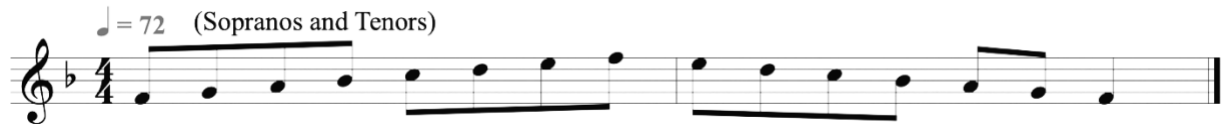
UNM CHOIRS PLACEMENT PROCEDURES (COVID) FALL 2020

All UNM Choir Placements will be made remotely through the submission of video (preferred) or audio recordings for Fall 2020. **This submission will replace any in-person placement meetings for the fall.** All student wishing to sing in a UNM choir must submit a brief placement recording.

RECORDING & SUBMISSION INFORMATION

Before completing your UNM Choir Placement Form (below), All students must prepare a recording of the following:

- 1) **State clearly** (1) your preferred first name and your last name, (2) your preferred voice part (if unsure simply say you're unsure), and (3) your preferred choir for fall 2020.
- 2) **All singers** record a major scale (by voice part, below)
 - a. Give yourself the starting pitch, then sing **unaccompanied**.
 - b. Note the tempo and rhythm
 - c. You may sing on **solfege** OR on a **neutral syllable** of your choice
 - d. If unsure of your voice part, sing the scale most comfortable to you



- 3) **All Singers** record a chromatic scale one octave C to C.
 - a. Give yourself the starting pitch, then sing **unaccompanied**.
 - b. Note tempo and rhythm
 - c. You may sing on **solfege** OR on a **neutral syllable** of your choice



- 4) **All Singers** record verse 1 of the song “My Country ‘Tis of Thee”.
 - a. **Use your best “ensemble sound”**: *with clarity, stability, and simplicity.*
 - b. Record **once** in a key in the **low range** of your voice.
 - c. Record a **second version** in a key in the **middle-high range** of your voice.
 - d. If you need a score, you can find one below, **keeping in mind that you must adjust the key/starting pitch for your purposes.**

- 5) ****Save** your recording and upload to Youtube or similar site.
 - a. Copy and paste the **LINK** to your video into your UNM Choir Placement Form where requested.
 - b. Make sure the video is viewable to those with the link.

- 6) ****Fill out the [UNM Choir Placement Form](#)** and include your video link where indicated.

****DEADLINE for all submissions is Wednesday, August 19th 4:00pm.**

****Singers interested in the UNM Concert Choir who submit late recordings, may forfeit their placement in that ensemble.**

My Country 'Tis of Thee

United States

