

Welcome to the UNM String Lab School – Fall 2025!

Greetings String Lab School families,

We're looking forward to a wonderful semester filled with music and community, and we're thrilled to have you be a part of it!

Kindly take a moment to read through all the information in this document, as it contains important details about semester dates, lesson policies, parking, and more.

Semester Dates and Events

UNM Fall 2025 Semester: August 18 – December 12

- **Recitals**
 - Sat, September 27, 10:30 | Sat, November 8, 10:30 | Sat, December 6, 10:30
(Sign up information TBA)
- **Sharing Classes**
 - Sat, October 25, 10:30 | Mon, November 3, 5:30 | Fri, December 5, 5:30pm
(Sign up information TBA)
- **Private Lessons**
 - Scheduled according to mutual availability
- **Beginning Violin Program group classes**
 - Saturdays, 9:30–10:15am, September 6–December 6
No class October 11 or November 19
- **Parent/Family Seminars (open to all supporting adults)**
 - Sat, October 4, 9:30 | Sat, November 1, 9:30 | Sat, November 22, 9:30
- **UNM Art Education Events**
 - October 18 & November 8 – drop-in artistic activities for kids in the Lobby

Please feel free to reach out with questions or concerns any time. Cheers to a harmonious semester ahead!

Aaron Jacobs

Director, UNM Music Prep School & String Lab School

AaronJacobs@unm.edu

Office: 505-277-8816

Laurie Lopez

Program Coordinator, UNM String Lab School

LJLopez@unm.edu

Protection of Minors on Campus

In accordance with UNM Minors on Campus policies, a parent, guardian, or authorized caregiver must accompany all minor children into and out of university facilities and remain on site for the full duration of each lesson and class. At the UNM String Lab School, we also ask that a supportive and engaged adult attend lessons with their child and take an active role in guiding at-home practice.

Parking (also see map on p. 4)

Parking availability on campus can fluctuate from week to week due to various campus events, Popejoy performances, and construction. We encourage you to plan and allow extra time to locate parking before lessons and classes. Thank you for your flexibility and understanding.

Parking options:

- **Saturday Cornell Parking Structure Permits:** Available for \$15 and valid for 12 uses (up to 3 hours each) on **Saturday mornings (9:00–12:00 PM)**.
 - *One permit code is included in the cost of the Beginning Violin Program (one per family).*
- **Weekend Free Parking:** Parking is free on the weekends in any unmetered, non-reserved space including A/E lot. The old A lot is now under construction for the new CCAT building.
- **Paid Parking (without a permit):**
 - **Cornell Parking Structure:** \$1.75 per 30 minutes, 7 days a week
 - **City Meters:** Located nearby on Central, Cornell, and Harvard – \$1 per hour.
 - **Premium Parking Lots:** Nearby lots offer a pay-by-phone option. Rates vary.

Instruments

Finding an instrument: Beware of cheaply made “violin-shaped objects” sold online, and do not purchase or rent an instrument without our guidance! Proper sizing and setup are essential for success. Your teacher will help you determine a correctly sized instrument. Remember: too small is better than too large.

Borrowing a String Lab School instrument: A limited number of full-size violins are available to adults who wish to learn alongside children enrolled in the Beginning Violin Program for \$50 per academic year.

Expectations for String Lab School Lessons and Classes

Location: All lessons will be given on the UNM campus – no exceptions.

Attendance: Please be punctual. Instructors are not expected to provide extra time when students are late. Private lessons cancelled without 24-hour notice may be forfeited. Make up lessons will only be given if the miss was unavoidable—illness or emergency—and are scheduled within the current semester.

Inclement weather or campus closures: Cancellations due to weather or other emergencies are extremely rare. If we determine that it is unsafe for families and teachers to travel due to weather conditions—or if UNM cancels classes or closes campus—we will cancel our classes. We will notify families immediately via email using the contact information provided at registration. Please note that there will be no makeup classes or refunds if a group class or other event must be cancelled.

Private Lessons

- Children: Because we are working with children in a focused setting, private lessons lengths are structured with flexibility in mind, and defined as follows:
 - Beginning lesson: any length, up to 30 minutes
 - Intermediate lesson: any length, up to 45 minutes
 - Advanced lesson: any length, up to 60 minutes
- Adults: Adult students can expect to use the full scheduled time.
- Before a child's lessons:
 - Review the week's assignments and the weekly preparations so your child feels confident going into the lesson.
 - See that your child has had a brief rest and a snack.
 - Make sure your child has gone to the bathroom, trimmed nails, and washed hands.

Family involvement

- Consistent evidence and extensive experience have shown that the amount learned and the speed with which it is learned is directly associated with the degree to which family members are involved in a child's study. Consistent, daily musical activities and music listening reinforce learning and help to establish practice as a daily habit.
- Whether it is a parent, guardian, grandparent, or caregiver, it is required that a supportive and engaged adult attend all lessons and classes with children and assist them during at-home practice sessions.
- Studying the instrument alongside a young student is also encouraged for those who are interested and can be very motivating. The String Lab School owns a limited number of instruments available for adult rental.
- When siblings or other children need to come along, please make every effort to help them remain unobtrusive to the learning environment by bringing along a quiet activity from home. (PS: We also understand and respect that kids will be kids!)

Working with UNM Student Interns

1. UNM Student Interns are college students receiving teacher training in String Pedagogy. Instruction is supervised by Dr. Aaron Jacobs, Assistant Professor of String Pedagogy, through lesson notes, video review, and course discussions. Lessons may be recorded for training purposes and will only be shared with String Pedagogy faculty and fellow students enrolled in String Pedagogy classes.
2. If you must discuss something with your UNM Student Intern, please do not wait until the end of the private lesson to bring it up, or the lesson following yours will be delayed.
3. Criticism of your child or the intern is not appropriate during lessons; please arrange a time to call or email your intern to discuss problems at a separate time. In case of real difficulties, please contact Aaron Jacobs (aaronjacobs@unm.edu) or Laurie Lopez (ljlopez@unm.edu).

Expectations for UNM Student Interns

- Interns will be prompt for all scheduled lessons. Their instrument will be tuned, notes and materials will be ready and available, and video equipment (when applicable) will be set up, cued, and ready to go before the lesson begins.

- Interns must give 24-hour's notice of changing or cancellation of any private lessons given in the UNM String Lab School. Emergencies will be handled on an individual basis, but with cell phones and email, interns and students should rarely, if ever, not show up to a scheduled lesson.
- Interns who miss more than one private lesson, are late to more than one lesson without a valid excuse, or are unprepared to teach your child, should be reported to Aaron Jacobs (aaronjacobs@unm.edu).

Follow the UNM String Lab School on social media!

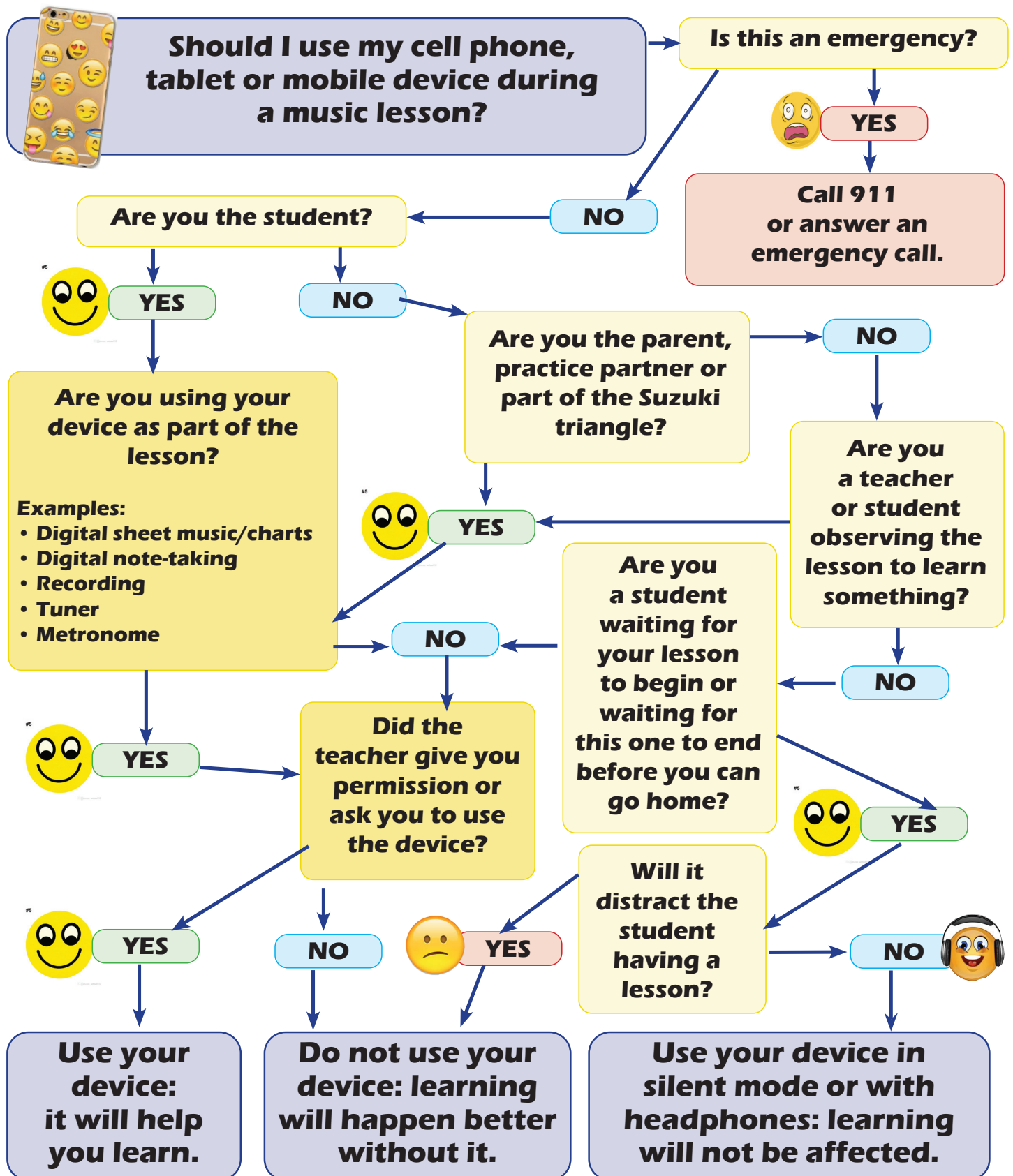
Facebook: <https://www.facebook.com/unmlabschool>

Instagram: [@unmstringlabschool](https://www.instagram.com/unmstringlabschool)

Website: stringlab.unm.edu

Location and Parking Map





Supplemental Activities for Young Musicians

There are many opportunities to listen to great music performed by professional musicians in Albuquerque and Santa Fe.

New Mexico Philharmonic

The professional symphony for the Albuquerque area plays several concert series throughout the year, from classical concerts, rock and pops concerts, neighborhood concerts to zoo concerts—concerts and tickets are available on their website, **nmphil.org**. Look for the NM Phil's SoundCard. Students can get a season pass for only \$30!

Santa Fe Symphony

The Santa Fe Symphony performs in the historic Lensic Theater in Santa Fe. Concerts and tickets are available on their website, **santafesymphony.org**.

Albuquerque Philharmonic

The Philharmonic brings together accomplished musicians with a passion for classical music to play great works of art at no expense to their audience. The Albuquerque Philharmonic is for every one; all ages, socioeconomic statuses. Concerts and information are available on their website, **abqphil.org**.

Chatter

Chatter weaves together traditional and contemporary chamber music in programs on Sunday mornings that include a reading by a poet/speaker of the morning and a two-minute celebration of silence. Tickets are only \$5 for kids under 13. Information and tickets are available on their website, **chatterabq.org**.

Santa Fe Pro Musica

Santa Fe Pro Musica offers a variety of classical music programs in historic Santa Fe venues, including an Orchestra Series in the Lensic Performing Arts Center, a String Works Series presenting world-renowned string quartets in St. Francis Auditorium and the Loretto Chapel Series featuring chamber music on historical instruments. Information and tickets are available on their website, **sfpromusica.org**.

Albuquerque Chamber Soloists

Albuquerque Chamber Soloists showcases the talents of outstanding New Mexico musicians, many of whom are members of New Mexico's leading orchestras and academic institutions. Albuquerque Chamber Soloists fosters unique programmatic adventures, often incorporating rare and bold programming with the time-honored masterpieces of the chamber music repertoire. Concerts and tickets are available on their website, **abqcs.com**.

Musicals and operas

You can often see musicians in action in Broadway productions, musicals, and operas in the area. Websites for more information:

landmarkmusicals.org

musicaltheatresw.com

popejoypresents.com

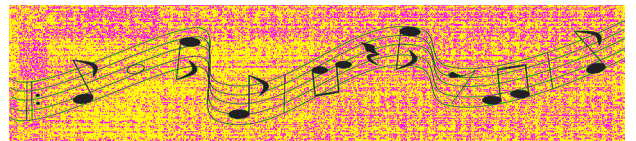
operasouthwest.org

santafeopera.org

Performances at UNM

There are lots of opportunities to listen to musical performances at UNM. Performance professors have their studios perform, each pedagogy student has a senior recital, the UNM orchestra and ensembles perform regularly, as well as guest artists.

finearts.unm.edu/events/



ROBERTSON & SONS

VIOLIN SHOP, INC.



Instrument Rental Information from Robertson's Violin Shop

Robertson's has developed a national reputation for supplying the highest quality rental outfits on the market. The "Johannes Kohr" is a fully carved instrument featuring a spruce top, maple back, sides, and scroll, ebony fittings, a Wittner tailpiece, a fiberglass bow with genuine horse hair, and a molded case (padded bag for cello). These instruments are available in all sizes for violins, violas, and cellos.

All instruments are adjusted in our own workshop to teacher specifications. Most of our staff have had experience playing professionally, teaching in the public schools as well as the collegiate level, or teaching privately and are well aware of the particulars in instrument set-up and adjustment.

Cost*1/16, 1/10, 1/8, 1/4, 1/2 size violins & 12" violas \$15.00 / month

3/4, & 4/4 size violins & 13" and larger violas \$20.00 / month

Cellos, all sizes \$35.00 / month

*All rentals include a bow, case, and rosin. Shoulder pads and other accessories are not included. Out-of-town customers, please call for shipping prices.

How to Order

To order your rental instrument, just download our rental contract, fill it out and fax it in to 505-889-7790. Please fill out your rental contract completely!! You may also scan a copy of your contract and email it to our rental coordinator, Deb Bluestone deb@robertsonviolins.com. If you have any questions about your contract, please call Deb at 505-889-2999 or 1-800-284-6546.

To Purchase

The first six months of rent can be applied towards the purchase of the rental instrument or any other instrument in our shop. You may use this credit at any time after your first six months of rental and is available to you even if you stop renting.

3201 Carlisle Blvd. NE
Albuquerque, NM 87110
Phone: 505.889.2999
<http://robertsonviolins.com/>

Tues-Fri: 9am-6pm Sat: 9am-5pm
Sundays & Mondays CLOSED