



2018-19

UNM String Lab School

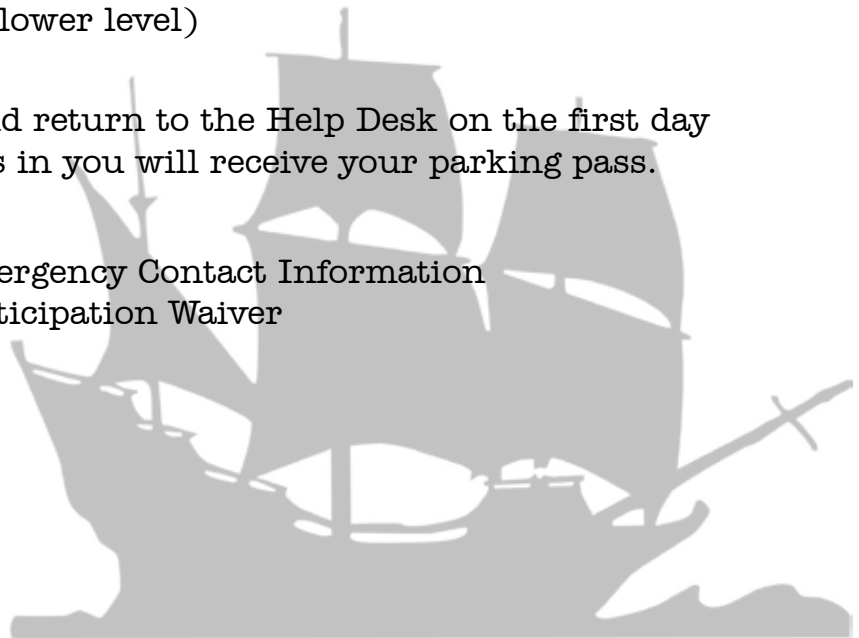
Parent Handbook

Inside you will find:

Page 2	Communication and Contact Information
Page 3	Fall 2018 Dates
Page 4	Spring 2019 Dates
Page 5	Noon Recitals
Page 6	Concert Dates
Page 7	Practice Help Station
Page 7	Snack Bar
Page 8	UNM Facilities
Page 8	Parking
Page 9-10	Lesson Expectations in the String Lab School
Page 11	Lesson Etiquette 101—Electronic Device Flow Chart
Page 12	String Lab School Practice Game
Page 13	Supplemental Activities
Page 14	String Lab School Program Class Structure
Page 15	Fine Arts Center Map (upper level)
Page 16	Fine Arts Center Map (lower level)
Page 17	Classroom Schematic

Please fill out the last three pages and return to the Help Desk on the first day of classes! Once you have turned this in you will receive your parking pass.

Page 18	Photo Release
Page 19	Minors on Campus Emergency Contact Information
Page 20	Minors on Campus Participation Waiver



Communication with the UNM String Lab School

Email



Email is the primary form of communication from the UNM String Lab School. Please make sure that you are getting emails from us! Add UNM String Lab School to your contacts, so that emails don't end up in your spam folder without you ever seeing them. If you are using a gmail account, emails from us may end up in your Promotions or Updates tab. Right mouse-click the email to move it to your Primary tab, and say "Yes" when you are asked about all future emails. If you have any questions, please email our Program Coordinator, Laurie Lopez at ljlopez@unm.edu.

Bulletin Boards



Current information is posted on the bulletin boards. There is one upstairs on an easel in the lobby and one downstairs on the wall outside the String Pedagogy office. Check these regularly for updates and information!

Practice Help Desk



The Doctor is In! Stop by the help desk in the Popejoy lobby on Saturdays between 8 am and 11am to answer your questions and provide quick help for tuning, practice ideas, etc.

Social Media

The String Lab School periodically posts fun photos and opportunities on its social media accounts. Please note that String Lab School information is usually emailed to you, and may not be posted on social media. Follow us to see the String Lab School in action!



Facebook: facebook.com/unmstringlabschool/



Instagram: instagram.com/unmstringlabschool/

Website

Registration and general information is posted on our website music.unm.edu/community/lab-school/



Phone

All of our interns, coordinators and directors teach classes, teach lessons, take classes and perform themselves. Because we spend most of our time out working, we are not often sitting in the office. We do check voice mail daily. To leave a voice mail for the UNM String Lab School, call (505) 277-1878.



Inclement Weather or Campus Closures

It is rare that the UNM String Lab School has to cancel group classes due to inclement weather. In the event this occurs, or the UNM campus is closed for an emergency, an email will be sent to you, and messages posted on social media at least one hour before the start of class. For morning classes, we will ask KOB and KOAT to add us to their cancellation lists. Unfortunately the UNM String Lab School is unable to reschedule group classes; fortunately we live in a very temperate climate and this has only happened once in the last twenty years!





UNM String Lab School Group Class Dates 2018-19

String Lab School—Fall 2018 Group Class Dates

Fall 2018—Friday Classes

August 17—Friday classes begin
August 24

*August 31 no classes—
Labor Day weekend*

September 7
September 14
September 21
September 28
October 5

*October 12 no classes—Fall
Break*

*October 19 no classes—
optional Hummingbird retreat*

October 26
November 2
November 9
November 16

*November 23 no classes—
Thanksgiving weekend*

November 30
December 7—Sharing Concert

Fall 2018—Saturday Classes

August 18—Saturday classes begin
August 25

*September 1 no classes—
Labor Day weekend*

September 8
September 15
Noon recital (Keller Hall)
September 22
September 29

Noon recital (Keller Hall)

October 6

Noon recital (Keller Hall)

*October 13 no classes—
Fall Break*

*October 20 no classes—
optional Hummingbird retreat*

October 27

Noon recital (Keller Hall)

November 3
November 10

Noon recital (Keller Hall)

November 17

Noon recital (Keller Hall)

*November 24 no classes—
Thanksgiving weekend*

December 1

Noon recital (Keller Hall)

December 8—Sharing Concert

Fall 2018—Wednesday Classes

August 22—Wednesday classes begin
August 29

September 5
September 12
September 19
September 26

October 3

*October 10 no classes—
Fall Break*

*October 18 no classes—
optional Hummingbird retreat*

October 24

October 31

November 7

November 14

*November 21 no classes—
Thanksgiving weekend*

November 28

December 7—Sharing Concert (Fri)

**Monster Play-In
at the noon recital**

**Saturday, October 27
Noon in Keller Hall**

**String Lab School
Tour Group Concert**

*Featuring: MAM Prep
Zealous Cellists
Mad About Music*

**Tuesday, November 13
7pm in Keller Hall**

Fall 2018—Dates to Remember

Noon Recitals

*Group classes performing
September 15—Keller Hall
Mad About Music*

*September 29—Keller Hall
Cello Box, Cello Bk 2,
Zealous Cellists, ZC Prep*

*October 6—Keller Hall
Violin Box, Violin Early Bk 1,
Violin Late Bk 1, Violin Bk 2*

October 27—Keller Hall

Monster Play-In

November 10—Keller Hall

*Mad About Music, Cello early Bk 1,
Cello late Bk 1*

November 17—Keller Hall

Suzuki Prep, Fiddling 1, Fiddling 2

December 1—Keller Hall

Sharing Concerts

December 7
(Wednesday & Friday classes)
December 8
(Saturday classes)

Tour Group Concert

November 13, Tuesday
*MAM Prep, Mad About Music
and Zealous Cellists
7pm Keller Hall*



UNM String Lab School Group Class Dates 2018-19

String Lab School—Spring 2019 Group Class Dates

Friday Classes

January 25—Friday classes begin
 February 1
 February 8
 February 15
 February 22
 March 1
 March 3—Gala Concert (Sun)
 March 8
*March 15 no classes—
 APS & UNM Spring Break*
 March 29
 April 5
 April 12
*April 19 no classes—
 APS Vernal Holiday*
 April 26
 May 3—Sharing Concert

Saturday Classes

January 26—Saturday classes begin
 February 2
 February 9
Noon recital (Keller Hall)
 February 16
 February 23
Noon recital (Keller Hall)
 March 2
 March 3—Gala Concert (Sun)
 March 9
Noon recital (TBD)
*March 16 no classes—
 UNM Spring Break*
 March 23
Noon recital (Keller Hall)
 March 30
 April 6
Noon recital (Keller Hall)
 April 13
Noon recital (Keller Hall)
*April 20 no classes—
 APS Vernal Holiday*
 April 27
Noon recital (B120)
 May 4—Sharing Concert

Wednesday Classes

January 23—Wednesday classes begin
 January 30
 February 6
 February 13
 February 20
 February 27
 March 3—Gala Concert (Sun)
 March 6
*March 14 no classes—
 UNM Spring Break*
 March 20
 March 27
 April 3
 April 10
*April 17 no classes—
 APS Vernal Holiday*
 April 24
 May 3—Sharing Concert (Fri)

**String Lab School
Gala Concert**
*All String Lab School
classes perform!*
Sunday, March 3
2pm in Continuing Ed.

Spring 2019—Dates to Remember

Noon Recitals

Group classes performing
 February 9—Keller Hall
Mad About Music
 February 23—Keller Hall
*Cello Box, Cello Bk 2,
 Cello early Bk 1, Cello late Bk 1*
 March 9—Location TBD
Violin Box, Violin Early Bk 1,

Violin Late Bk 1

March 23—Keller Hall
Suzuki Prep
 April 6—Keller Hall
Zealous Cellists
 April 13—Keller Hall
Fiddling 1, Fiddling 2
 April 27—B120
Mad About Music

Gala Concert

March 3—Continuing Ed 2pm
All String Lab School Group Classes

Sharing Concerts

May 3
(Wednesday & Friday classes)
 May 4
(Saturday classes)

Noon Recitals at the UNM String Lab School

Why do group classes perform in noon recitals?

Performing in groups provides students with the opportunity to prepare and share their music-making with peers. Group playing is a beneficial way to learn ensemble skills. Listening to each other, staying together, matching tone and style, increasing attention and self-discipline are a few of these skills. These sorts of musical experiences pay off in the long run. Musicians who fiddle, play in orchestras, and chamber groups must possess these skills, developed to a higher level. Our group lessons and noon recitals hone those same skills, which can inspire and motivate children to push for personal improvement.

Why attend a noon recital?

“Watching others perform is as valuable as performing.” This is a premise of any Suzuki program. Children learn patience, impulse control, respect for others and a desire to play well. Noon recitals are a great way to listen to other students play the Suzuki repertoire. Check out the dates listed in this calendar and attend as many as you can.



Why stay for the whole recital?

As children learn to sit quietly and watch, they are learning impulse control and respect for others. At the same time, they are developing familiarity with the repertoire and a desire to learn it....more reasons for parents to arrange their schedules to remain at recitals until the last student has performed!

Why perform individually in a noon recital?

When students walk onto stage for their first “solo” they feel the support of the recital hosts, their private teacher, their peers and their parents. The audience is there to celebrate the efforts of the soloist – not to judge the outcomes. Sharing music is a natural progression from lessons and gives teachers and students an opportunity for self-reflection, evaluation and most importantly, links process to product.

Noon Recital Schedule

Fall 2018

Group classes performing
September 15—Keller Hall
Mad About Music
September 29—Keller Hall
*Cello Box, Cello Bk 2,
Zealous Cellists, ZC Prep*
October 6—Keller Hall
*Violin Box, Violin Early Bk 1,
Violin Late Bk 1, Violin Bk 2*
October 27—Keller Hall
Monster Play-In
November 10—Keller Hall
*Mad About Music, Cello Early Bk 1,
Cello Late Bk 1*
November 17—Keller Hall
Suzuki Prep, Fiddling 1, Fiddling 2
December 1—Keller Hall

Spring 2019

Group classes performing
February 9—Keller Hall
Mad About Music
February 23—Keller Hall
*Cello Box, Cello Bk 2,
Cello Early Bk 1, Cello Late Bk 1*
March 9—TBD
*Violin Box, Violin Early Bk 1,
Violin Late Bk 1*
March 23—Keller Hall
Suzuki Prep
April 6—Keller Hall
Zealous Cellists
April 13—Keller Hall
Fiddling 1, Fiddling 2
April 27—B120
Mad About Music

How do I sign my child up to play in a noon recital?

Your child’s private teacher will help you choose a date, a polished piece to perform and will sign you up for the recital as well as a rehearsal slot with our collaborative pianist, Craig Brown, on the morning of the performance.

Special Concerts at the UNM String Lab School

Come in costume (no masks, please!) for a Suzuki play-in at the String Lab School! We start with the more advanced pieces and stair-step down to Twinkle.

By the end of the concert, all of our String Lab School musicians are together on stage to play Pumpkin on a Fence Post.

Monster Play-In
at the noon recital
Saturday, October 27
Noon in Keller Hall

**String Lab School
Tour Group Concert**
*Featuring: MAM Prep
Zealous Cellists
Mad About Music*
Tuesday, November 13
7pm in Keller Hall

This concert is a treat for musicians at every level!

Our most advanced students in the UNM String Lab School will take the stage to perform folk music from all over the world. Don't miss this opportunity to see all the touring groups perform together.

Invite your grandparents, friends and neighbors to celebrate all the things your musician is learning at the UNM String Lab School. Come dressed up for a special afternoon of music as each class performs on stage.

**String Lab School
Gala Concert**
*All String Lab School
classes perform!*
Sunday, March 2
2pm in Continuing Ed.

Sharing Concerts

Fall 2018	Spring 2019
<i>Wednesday & Friday classes</i>	<i>Wednesday & Friday classes</i>
Friday, December 7	Friday, May 3
4:30pm in Keller Hall	4:30pm in B120
<i>Saturday classes</i>	<i>Saturday classes</i>
Saturday, December 8	Saturday, May 4
9am in Keller Hall	9am in Keller Hall

At the end of each semester, classes share what they have been learning with other classes. Seeing what the next class is performing can be very motivational for young musicians.

We will share a potluck reception at the end.

Please note that performance times are listed. Performers will be given a call time that allows time for tuning, warming up, etc.

Practice Help Desk



The Practice Help Desk is your one-stop shop for information about the UNM String Lab School! The Help Desk pops up in the lobby of Popejoy from 8-11 am every Saturday the String Lab School is in session. Our program coordinator, Laurie Lopez, is available to help you navigate the String Lab School, lessons, and practice at home.

The Help Station is a little busy around the change of classes. If you need a mini tutorial or instrument help, please plan to come to the station when classes are in session and the lobby is quieter.

This is a resource just for you, so take advantage! Stop by, say hi, and get all your questions answered. What kinds of things do parents stop and ask for help with at the desk? Below is a small sample:

Questions about:

- parking passes
- tuition
- payments
- scheduling
- noon recitals
- private teachers
- which class is next
- where your class meets
- concert information
- and more!

Help with:

- tuning
- sizing of instruments
- restringing
- setting a shoulder rest
- finger tapes
- practice strategies
- lesson etiquette
- and more!

Mini tutorials on:

- bow holds
- posture
- playing position
- left hand position
- set, touch, release
- elbow swings
- and more!

**P.S. No need to bring 5¢
— this advice is free!**

Snack Bar

Mad About Music runs a snack bar most Saturdays that the UNM String Lab School is in session. Stop by for a treat and a cup of coffee before or after class! There is juice, coffee, water, tea, hot chocolate, donuts, granola bars, trail mix, bananas, bagels and other goodies available.

Most items in the snack bar are \$1. Although the Snack Bar is unable to process credit cards, Punch Cards are available to make your Saturdays easier—purchase a card for \$10, and your card is available at the snack bar for 10 punches. No need to remember cash every week.

The Snack Bar may have other items for sale such as tote bags, practice kits, tshirts and ornaments.

UNM String Lab School Facilities

The UNM String Lab School uses classrooms and recital halls that belong to the University of New Mexico. As such, university policies apply.

- No use of wheels (bikes, scooters, skateboards, rollerblades/skates, heeies, etc) allowed in the building
- No shouting, running, playing tag, catch, or disruptive games in the building
- No smoking on the university campus

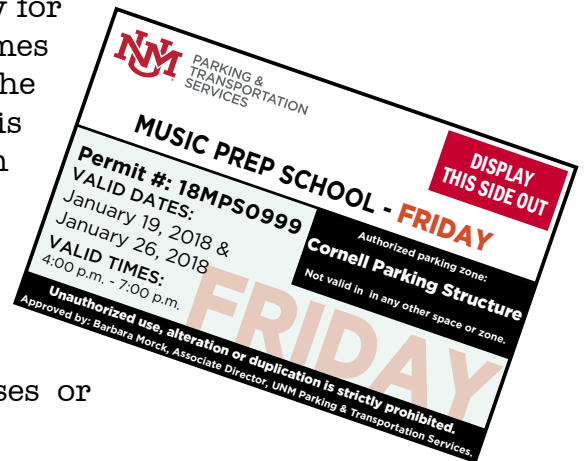
Other activities and classes are taking place in the building, so we are asked to be respectful. Please clean up after yourselves and your children in classrooms and sitting areas. Remove trash, erase chalkboard doodlings, and return chairs to original seating as appropriate. We don't want teachers and parents in the next class to have to clean up after you! If there is a spill, please clean it up.

Restrooms should also be left in good condition. The building is public, so please be aware that there may be other people in the building. If restrooms need attention, please let the String Lab School know so we can call a custodian.

Because the building is public, it is recommended that you stay with your child in the building, just to be safe.

Parking at the UNM String Lab School

Friday or Saturday classes include one permit per family for the UNM Cornell parking structure. The dates and times for each pass will be listed on it. A pass will be given for the fall semester and a new one for the spring semester. This pass must be displayed on your dashboard if you park in the structure. Temporary passes good for the first two sessions will be emailed to you. Permanent passes will be given out during the first two weeks of classes, in exchange for your completed photo release, minors on campus emergency contact form and minors on campus participant waiver. A limited quantity of second passes or replacement passes are available for \$10 each.



Expectations for String Lab School Lessons

A. Parents and String Lab School Children

1. Because we are working with children in a very focused situation, private lessons are defined as follows:
 - a. Beginning lesson.....any length, not exceeding 30 minutes
 - b. Intermediate lesson.....any length, not exceeding 45 minutes
 - c. Advanced lesson.....any length, not exceeding 60 minutes
2. Please be punctual to all private lessons! UNM intern teachers are very busy and cannot be expected to give you extra time if you are late. Also, except in extreme emergencies, you are expected to attend all scheduled lessons. Lessons cancelled without 24- hour notice may be forfeited. Make up lessons will only be given if the miss was unavoidable—illness or emergency—and are scheduled within the current semester. If you have questions, please contact Laurie Lopez (ljlopez@unm.edu) or Susan Kempter (SusanKempter@gmail.com).
3. Before your child's private or lesson:
 - a. Review the week's assignments and the weekly preparations so your child feels confident going into the lesson.
 - b. See that your child has had a brief rest and a snack.
 - c. Make sure your child has gone to the bathroom, trimmed nails and washed hands.
4. The care and maintenance of the instruments and/or box and stick are your responsibility. Damage to either UNM instruments/boxes, or rented instruments can be costly and time consuming to repair.

Your UNM intern teacher will advise you when new strings, bow hair, etc., are needed. These are your responsibility and should be taken care of within the week. Robertson's Violin Shop on Carlisle is the best resource.
5. Parents must be present at all private lessons. No exceptions!
6. Parents are not required to attend group lessons, but are encouraged to attend. If you do not attend, please make arrangements with another parent to take your child to the bathroom, should the need arise. Children may not go to the bathroom alone, nor can String Lab School staff leave their duties to take your child. Please be very prompt in picking your child up at the end of class.
7. Parent's full attention will be required for each private lesson. Siblings must be quiet and unobtrusive during all lessons—both private and group. If they must attend, please bring appropriate quiet activities for them.
8. If you have to discuss something with your UNM intern teacher, do not wait until the end of the private lesson to bring it up, or the lesson following yours will be delayed.
9. Criticism of your child or the intern is not appropriate during lessons; please arrange a time to call, or email your intern to discuss problems at a separate time. In case of real difficulties, please contact Susan Kempter (SusanKempter@gmail.com).

Continued

Expectations for String Lab School Lessons

A. Parents and String Lab School Children....continued

10. UNM interns are college students who have spent at least one year in the classroom preparing to teach your child. Lessons, both private and group, are under the supervision of the UNM pedagogy faculty, via lesson notes, videos and discussion in pedagogy classes. Your child's lesson may be videotaped as part of this process, but will only be shared with pedagogy faculty and will be deleted at the end of the semester.

11. All private lessons will be given on the UNM campus. No exceptions!

B. UNM Intern Teacher

1. Interns will be prompt for all scheduled lessons. Their instrument will be tuned, notes and materials will be ready and available and video equipment will be set up, cued, and ready to go before the lesson begins.

2. Interns must give 24 hours notice of changing or cancellation of any private lessons given in the UNM String Lab School. Emergencies will be handled on an individual basis, but with cell phones and email, interns and students should rarely, if ever, not show up to a scheduled lesson!

3. Intern teachers who miss more than one private lesson, are late to more than one lesson without a valid excuse, or are unprepared to teach your child, should be reported to Susan Kempter. Interns receive grades which reflect their ability to arrive on time and be prepared for each lesson they teach.

4. Regular videos of private lessons will be required each semester. Video consultations are held each semester. Particulars on this assignment will be handed out in class. Cameras are available in the Pedagogy Room [B123] and can be checked out for this use. Lesson videotaped as part of this process will only be shared with pedagogy faculty and will be deleted at the end of the semester.

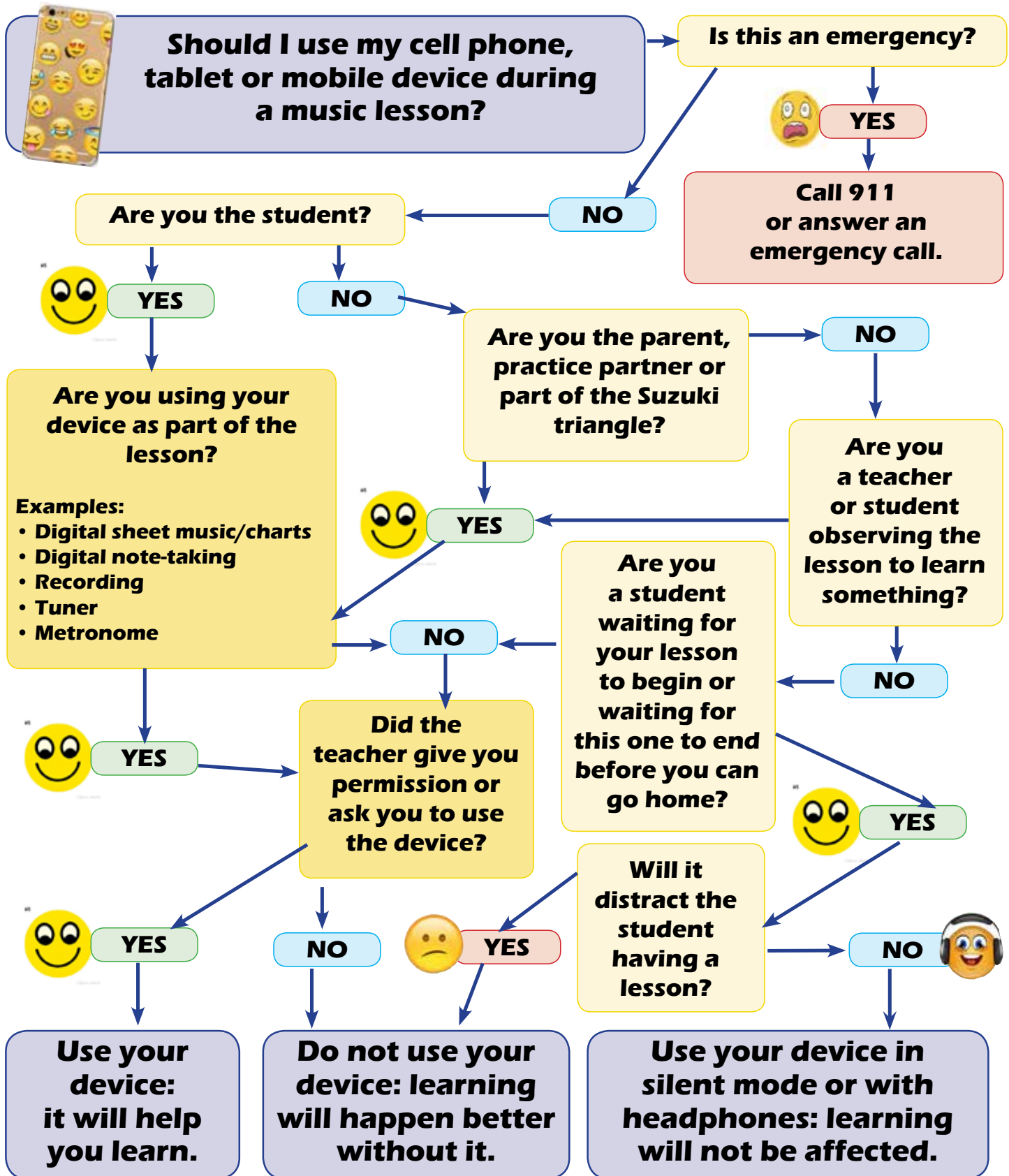
5. At the end of each semester, interns will fill out the short section on the UNM String Lab School Tracking Form for each of his/her String Lab School students.

6. Interns will teach in group and private lessons as assigned and will assist in all performances and/or activities of the UNM String Lab School Program.

7. All private lessons will be given on the UNM campus. No exceptions!



UNM String Lab School Lesson Etiquette 101





String Lab School Pirate Practice Game

In group class on September 7 and 8, students will each receive a pirate ship base. Label your ship and hang it in the hall outside the pedagogy office. For every 5 good practices (no complaining, arguing, etc) your child earn a new piece for his/her ship. During the fall semester foundational pieces will be earned—masts, portholes, sails and flags.

Wk 9/10	<input type="checkbox"/>	<input type="checkbox"/>	<input type="checkbox"/>	<input type="checkbox"/>	<input type="checkbox"/>	<input type="checkbox"/>	<input type="checkbox"/>
Wk 9/17	<input type="checkbox"/>	<input type="checkbox"/>	<input type="checkbox"/>	<input type="checkbox"/>	<input type="checkbox"/>	<input type="checkbox"/>	<input type="checkbox"/>
Wk 9/24	<input type="checkbox"/>	<input type="checkbox"/>	<input type="checkbox"/>	<input type="checkbox"/>	<input type="checkbox"/>	<input type="checkbox"/>	<input type="checkbox"/>
Wk 10/1	<input type="checkbox"/>	<input type="checkbox"/>	<input type="checkbox"/>	<input type="checkbox"/>	<input type="checkbox"/>	<input type="checkbox"/>	<input type="checkbox"/>
Wk 10/8	<input type="checkbox"/>	<input type="checkbox"/>	<input type="checkbox"/>	<input type="checkbox"/>	<input type="checkbox"/>	<input type="checkbox"/>	<input type="checkbox"/>
Wk 10/15	<input type="checkbox"/>	<input type="checkbox"/>	<input type="checkbox"/>	<input type="checkbox"/>	<input type="checkbox"/>	<input type="checkbox"/>	<input type="checkbox"/>
Wk 10/22	<input type="checkbox"/>	<input type="checkbox"/>	<input type="checkbox"/>	<input type="checkbox"/>	<input type="checkbox"/>	<input type="checkbox"/>	<input type="checkbox"/>
Wk 10/29	<input type="checkbox"/>	<input type="checkbox"/>	<input type="checkbox"/>	<input type="checkbox"/>	<input type="checkbox"/>	<input type="checkbox"/>	<input type="checkbox"/>

Wk 11/5	<input type="checkbox"/>	<input type="checkbox"/>	<input type="checkbox"/>	<input type="checkbox"/>	<input type="checkbox"/>	<input type="checkbox"/>	<input type="checkbox"/>
Wk 11/12	<input type="checkbox"/>	<input type="checkbox"/>	<input type="checkbox"/>	<input type="checkbox"/>	<input type="checkbox"/>	<input type="checkbox"/>	<input type="checkbox"/>
Wk 11/19	<input type="checkbox"/>	<input type="checkbox"/>	<input type="checkbox"/>	<input type="checkbox"/>	<input type="checkbox"/>	<input type="checkbox"/>	<input type="checkbox"/>
Wk 11/26	<input type="checkbox"/>	<input type="checkbox"/>	<input type="checkbox"/>	<input type="checkbox"/>	<input type="checkbox"/>	<input type="checkbox"/>	<input type="checkbox"/>

Color, initial, add a sticker...have fun and be creative as you mark each box! If your child earned 5 boxes in the week, stop by the Practice Help Desk in the lobby to choose a foundational piece to add to your pirate ship.



Please note we will not have pieces available the weekend of the sharing concerts, so that week is not included.



String Lab School Pirate Practice Game

Once classes begin on January 25 and 26, student can earn decorations for 10 good practices (no complaining, arguing, etc) **every two weeks** to add to the pirate ship—pirates, mermaids, treasure, etc. Don't worry, foundational pieces can still be earned if your child has not quite finished his or her ship.

Wk 1/28	<input type="checkbox"/>	<input type="checkbox"/>	<input type="checkbox"/>	<input type="checkbox"/>	<input type="checkbox"/>	<input type="checkbox"/>	<input type="checkbox"/>
Wk 2/4	<input type="checkbox"/>	<input type="checkbox"/>	<input type="checkbox"/>	<input type="checkbox"/>	<input type="checkbox"/>	<input type="checkbox"/>	<input type="checkbox"/>
Wk 2/11	<input type="checkbox"/>	<input type="checkbox"/>	<input type="checkbox"/>	<input type="checkbox"/>	<input type="checkbox"/>	<input type="checkbox"/>	<input type="checkbox"/>
Wk 2/18	<input type="checkbox"/>	<input type="checkbox"/>	<input type="checkbox"/>	<input type="checkbox"/>	<input type="checkbox"/>	<input type="checkbox"/>	<input type="checkbox"/>
Wk 2/25	<input type="checkbox"/>	<input type="checkbox"/>	<input type="checkbox"/>	<input type="checkbox"/>	<input type="checkbox"/>	<input type="checkbox"/>	<input type="checkbox"/>
Wk 3/4	<input type="checkbox"/>	<input type="checkbox"/>	<input type="checkbox"/>	<input type="checkbox"/>	<input type="checkbox"/>	<input type="checkbox"/>	<input type="checkbox"/>
Wk 3/11	<input type="checkbox"/>	<input type="checkbox"/>	<input type="checkbox"/>	<input type="checkbox"/>	<input type="checkbox"/>	<input type="checkbox"/>	<input type="checkbox"/>
Wk 3/18	<input type="checkbox"/>	<input type="checkbox"/>	<input type="checkbox"/>	<input type="checkbox"/>	<input type="checkbox"/>	<input type="checkbox"/>	<input type="checkbox"/>

Wk 3/25	<input type="checkbox"/>	<input type="checkbox"/>	<input type="checkbox"/>	<input type="checkbox"/>	<input type="checkbox"/>	<input type="checkbox"/>	<input type="checkbox"/>
Wk 4/1	<input type="checkbox"/>	<input type="checkbox"/>	<input type="checkbox"/>	<input type="checkbox"/>	<input type="checkbox"/>	<input type="checkbox"/>	<input type="checkbox"/>
Wk 4/8	<input type="checkbox"/>	<input type="checkbox"/>	<input type="checkbox"/>	<input type="checkbox"/>	<input type="checkbox"/>	<input type="checkbox"/>	<input type="checkbox"/>
Wk 4/15	<input type="checkbox"/>	<input type="checkbox"/>	<input type="checkbox"/>	<input type="checkbox"/>	<input type="checkbox"/>	<input type="checkbox"/>	<input type="checkbox"/>
Wk 4/22	<input type="checkbox"/>	<input type="checkbox"/>	<input type="checkbox"/>	<input type="checkbox"/>	<input type="checkbox"/>	<input type="checkbox"/>	<input type="checkbox"/>

Congratulations! On May 4 at the sharing concert, completed pirate ships will be available for pick up.



Supplemental Activities for Young Musicians

There are lots of opportunities to listen to great music performed by professional musicians in Albuquerque and Santa Fe.

New Mexico Philharmonic

The professional symphony for the Albuquerque area plays several concert series throughout the year, from classical concerts, rock and pops concerts, neighborhood concerts to zoo concerts—concerts and tickets are available on their website, nmphil.org. Look for the NM Phil's SoundCard. Students can get a season pass for only \$30!

Santa Fe Symphony

The Santa Fe Symphony performs in the historic Lescic Theater in Santa Fe. Concerts and tickets are available on their website, santafesymphony.org.

Albuquerque Philharmonic

The Philharmonic brings together accomplished musicians with a passion for classical music to play great works of art at no expense to our audience. The Albuquerque Philharmonic is for every one; all ages, socioeconomic statuses. Concerts and information are available on their website, abqphilharmonic.org

Chatter

Chatter weaves together traditional and contemporary chamber music in programs on Sunday mornings that include a reading by a poet/speaker of the morning and a two-minute celebration of silence. Tickets are only \$5 for kids under 13. Information and tickets are available on their website, chatterabq.org.

Albuquerque Chamber Soloists

Albuquerque Chamber Soloists showcases the talents of outstanding New Mexico musicians, many of whom are members of New Mexico's leading orchestras and academic institutions. Albuquerque Chamber Soloists fosters unique programmatic adventures, often incorporating rare and bold programming with the time-honored masterpieces of the chamber music repertoire. Concerts and tickets are available on their website, abqcs.com.

Musicals and operas

You can often see musicians in action in Broadway productions, musicals, and operas in the area. Websites for more information:

landmarkmusicals.org
musicaltheatresw.com
popejoypresents.com
operasouthwest.org
santafeopera.org

Performances at UNM

There are lots of opportunities to listen to musical performances at UNM. Performance professors have their studios perform, each pedagogy student has a senior recital, the UNM orchestra and ensembles perform regularly, as well as guest artists. finearts.unm.edu/events/

Performances by String Lab School Interns and Coordinators

You can see our own coordinators and interns in action in the various ensembles already listed, as well as in local bands:

@TylorBrandonBand (Facebook page)

lechatlunatique.com



If you would like your child to be involved in other musical groups, there are several to choose from!

Fiddling at the UNM String Lab School

Emily Anslover, four-time state fiddle champion, teaches Beginning and Advanced Fiddling through the UNM String Lab School on Wednesday evenings for students who are in Late Book One and up. All stringed instruments are welcome!

Amigos Musicales

Amigos Musicales is a one-week summer chamber music program for more advanced students of middle school and high school age from the Albuquerque area. Several local studio and school orchestra teachers collaborate with Anne Karlstrom to coach student string quartets. The quartets rehearse daily for a week and put on a concert at the end. albuquerque-suzuki-violin.com

Albuquerque Suzuki Retreat at Hummingbird

In October, Albuquerque area violin, viola, cello and bass students of all ages can spend a day or overnight (for ages 8+) at Hummingbird Music Camp. Group activities, musical instruction and mini concerts make a fun getaway musical adventure. For more information, contact albuquerque-suzuki-school@gmail.com.

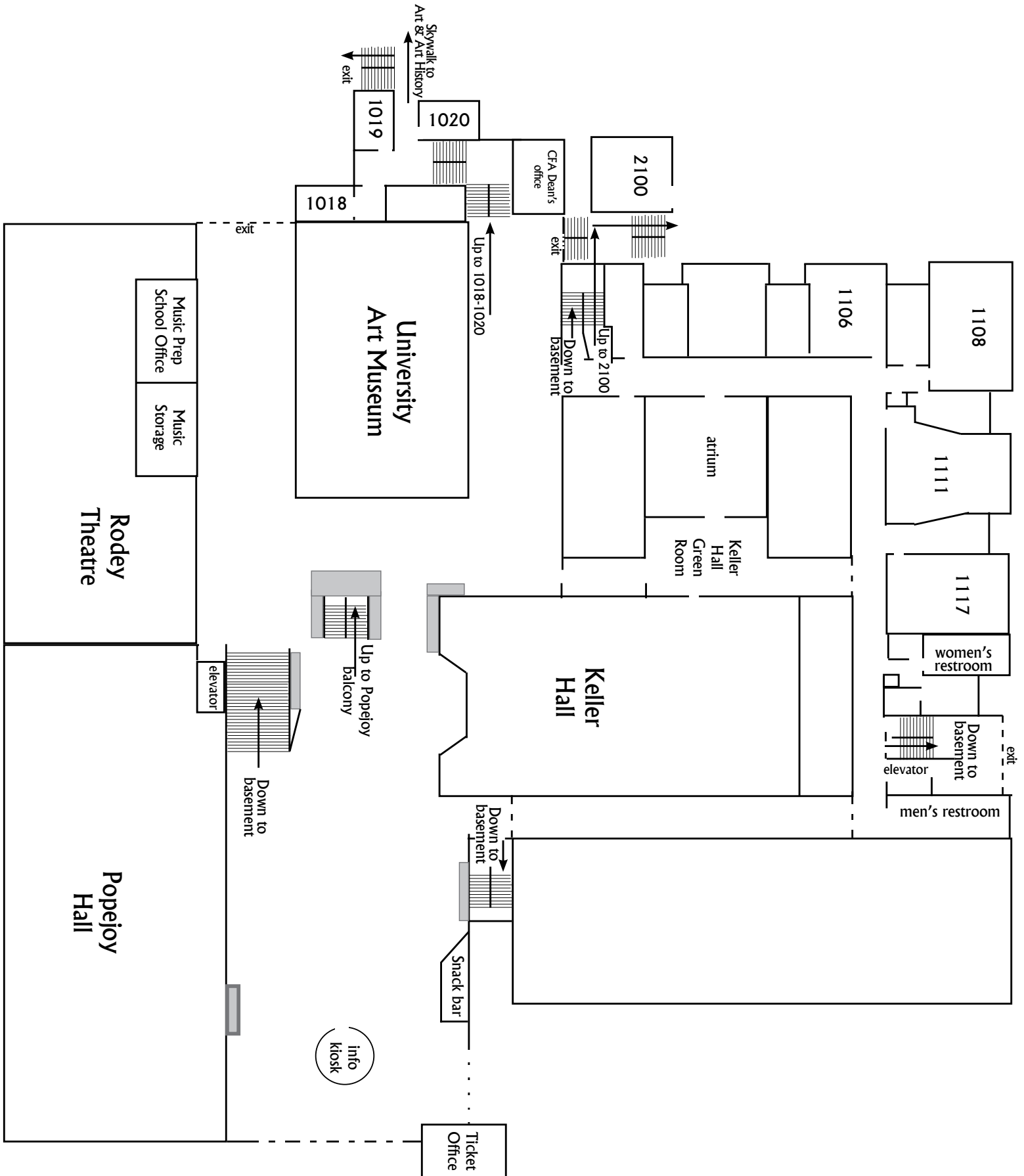
UNM String Lab School Program Class Structure

Children progress through the repertoire at individual paces—group classes may be repeated multiple times and children may move from one class to another as required, with approval from the director or program coordinator.

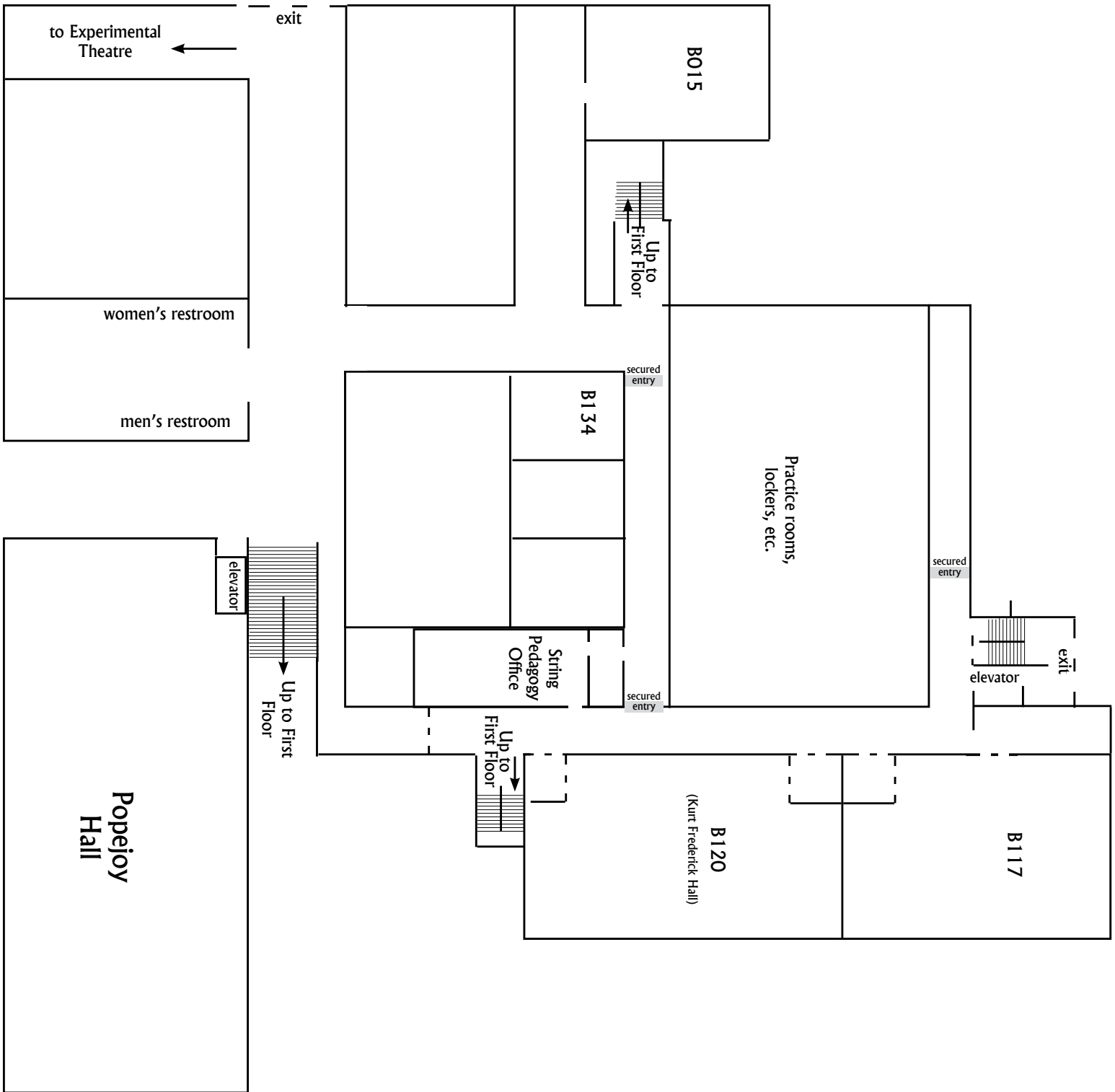
Group Class	Private Lessons	Reading Class	Special Interest
Suzuki Prep <i>Preschool prep— no instruments (ages 3-4)</i>	_____	_____	_____
Beginning Box <i>Beginning instrument— violin, viola, cello or bass (ages 5-8)</i> OR.... Older Beginners <i>Beginning instrument— violin, viola, cello or bass (ages 8+)</i>	First Semester— <i>Parent Education: parents learn basic instrument techniques and practice techniques in lieu of private lessons</i> Second Semester— <i>Private lessons: College pedagogy interns contact parents to set up 13 weekly private lessons (up to 30 minutes)</i>	_____	_____
Twinklers <i>Very early Book 1— Violin only: Twinkle - Go Tell Aunt Rbody</i>	30 minutes <i>26 weekly private lessons (up to 30 minutes) with col- lege intern</i>	Music Mind Games 1 <i>Available as an add-on for those who wish to start reading literacy</i>	_____
Early Book 1 <i>Violin: O Come Little Children - Andantino Cello: Twinkle - Perpetual Motion</i>	30 minutes <i>26 weekly private lessons (up to 30 minutes) with college pedagogy intern</i>	Music Mind Games 1 or Music Mind Games 2 <i>For students who have already taken MMG1</i>	_____
Late Book 1 <i>Violin: Etude - Hunter's Chorus Cello: Long, Long Ago - May Time</i>	30 minutes <i>26 weekly private lessons (up to 30 minutes) with college pedagogy intern</i>	Reading 1 <i>Instrument-specific clef reading classes begin at this level</i>	Fiddling 1 <i>Available as an add-on for those who wish to explore new musical techniques</i>
Book 2	30 -45 minutes <i>26 weekly private lessons (up to 45 minutes) with college pedagogy intern</i>	Reading 2 <i>Instrument-specific clef reading classes continue</i>	Fiddling 2 <i>Available as an add-on for those who wish to explore new musical techniques</i>
Book 3	45 minutes <i>26 weekly private lessons (up to 45 minutes) with college pedagogy intern</i>	Intro to Chamber <i>Small ensemble reading</i>	
Book 4+	45 minutes <i>26 weekly private lessons (up to 45 minutes) with college pedagogy intern</i>	MAM Prep <i>Read and learn folk music played by Mad About Music</i>	_____
Mad About Music or Zealous Cellists <i>Advanced repertoire and touring groups for Book 6+</i>	_____	_____	

Please note that this is a generalized structure. Classes may vary slightly from year to year, dependent on enrollment and program needs.

Ground floor of the Fine Arts Center at UNM



Basement floor of the Fine Arts Center at UNM



<u>2018-2019</u>	Friday 4:30 pm	Friday 5:30 pm	Saturday 8:00 am	Saturday 9:00 am	Saturday 10:00 am	Saturday 11:00 am	Saturday 12:00 pm
B 015	Zealous Cellists Prep Maris	Cello Book 3 Maris	Suzuki Prep Terra	MPS	MPS	MPS	MPS
B 117	Mad About Music Laurie	Mad About Music Laurie	Beginning Cello Maris	Cello Early Book One Maris	Cello Late Book One Lisa	Cello Book Two Maris	
B 120	Zealous Cellists (at 5 in the fall)	Zealous Cellists Lisa	Violin Box Class Kristin	Violin Late Book 1 Kristin	Violin Early Book 1 Kristin	Cello Reading Lisa	Recital
1106			MPS	MPS	MPS	MPS	
1108	Reading 2 Anne	Book 2 Maria	MPS	MPS	MPS	MPS	MPS
1111	MAM Prep Erin	Book 4+ Erin	MPS	MPS	MPS	MPS	MPS
1019	Not Available	Not Available	Older Beginners	Twinklers Susan/Monica			
1020	Not Available	Not Available		MMG Anne	Violin Reading 1 Anne		
1018	Not Available	Not Available					

Please note: Room schedules are subject to change, based on enrollment and program needs. You will be notified if your classroom changes.

UNLIMITED IMAGE RELEASE AGREEMENT

GRANT

For consideration which I acknowledge, I irrevocably grant to the Regents of the University of New Mexico (UNM) acting through its Lab School and UNM's assigns, licensees, and successors, ("UNM") the right to use images taken of me or my children in all forms and media including composites or modified representations for educational purposes, including web sites. I will make no monetary or other claim against UNM for the use of said images or videos, and I acknowledge the University's right to crop or treat the images or video at its discretion. I also understand that once my image or images of my children are posted to afore mentioned websites or publications, any computer user on or off campus can download the images or video.

I hereby waive any right to inspect or approve the finished images, video, publications, or electronic matter that may be used in conjunction with them now or in the future, whether that use is known to me or unknown.

RELEASE

I release UNM and UNM's assigns, licensees and successors from any claims that may arise regarding the use of my image or images of my children, including any claims of defamation, invasion of privacy, infringement of moral rights, rights of publicity or copyright. UNM is not permitted to include my name or my children's names as a credit in connection with the image.

UNM is not obligated to utilize any of the rights granted in this Agreement.

I have read this release before signing below and I fully understand the contents, meaning and impact of this release and I am over the age of 18.

I understand that I am free to address my specific questions regarding this release by submitting those questions in writing prior to signing and I agree that my failure to do so will be interpreted as a free and knowledgeable acceptance of the terms of this release.

Child(ren)'s Name(s): _____ Date: _____

If you do NOT consent to the terms herein, put an "X" instead of your signature. Please provide an email & phone number.

Parent/Guardian Consent (included if the person is under the age of 18)

I am the parent or guardian of the minor named above. I have the legal right to consent to and do consent to the terms and conditions of the model release.

Parent/Guardian Name (print): _____ Date: _____

Parent/Guardian Signature: _____

Parent/Guardian Email & Phone #s: _____

MINOR PARTICIPANT EMERGENCY CONTACT AND MEDICAL RELEASE FORM

Name of Minor Participant: _____ **Date of Birth:** _____

Name of Parent or Legal Guardian: _____

Address: _____
Street Address
City
State
Zip

Home phone: _____ **Business Phone:** _____ **Cell Phone:** _____

Emergency Contacts/Authorized Pick-Ups: (required)

Please list other possible individuals who may be contacted in case of emergency if you are not available, and whether or not they are authorized to pick up the minor. Please note, any person not listed below WILL NOT be permitted to pick up the minor without written permission from a parent or legal guardian.

Name	Phone	Pick-Up?	Relationship to Minor
1.		YES / NO	
2.		YES / NO	
3.		YES / NO	

Medical Conditions/Allergies: (required)

If the minor has any condition that may require special treatment it is imperative that a medical provider is alerted. Please indicate below any on-going medical or emotional problems that may require special attention (e.g., epilepsy, allergies, asthma, disability, anxiety, depression, etc.) including medications currently taken. Use reverse side if necessary.

Medical Condition(s):	Medication/Dosage:	With Minor?
		YES / NO
		YES / NO
		YES / NO
Allergies:	Describe reaction:	Severity?
		LOW/MED/HIGH
		LOW/MED/HIGH

Primary Care Physician's Name: _____ **Phone:** _____

Health Insurance Company Name: _____ **Policy Number:** _____

I verify that all the information provided is correct and complete. I realize that participation involves an inherent potential risk. In the event of an emergency, I authorize the University of New Mexico ("UNM") and its agents or representatives to make arrangements as reasonably necessary to ensure my child's welfare. In the event of an emergency, permission is granted to UNM to authorize emergency transportation, emergency medical care and/or treatments and hospital care for the minor. I agree to be responsible for all necessary charges incurred by any hospitalization or treatment rendered pursuant to this authorization.

Signature of Parent/Legal Guardian

Print Parent/Legal Guardian Name

Date

MINOR PARTICIPANT WAIVER AND NOTICE OF RISK

Program Name:	UNM String Lab School
Start & End Dates	8/30/18- 5/4/18
Participant's Name	
Parent or Legal Guardian Name	

The University of New Mexico (“UNM”) offers youth programs through the **UNM String Lab School**. A description of all youth programs, including the Participant’s chosen program is available online at <http://music.unm.edu/community/lab-school/>.

As Participant’s parent or legal guardian, I understand and acknowledge that certain risks are inherent to participating in recreational activities and youth programs, due to one’s own actions, the actions of others or a combination of both. These risks may result in injury, minor or serious, as well as damage to personal property. If I have any specific questions about Participant’s safety or the risks associated with Participant’s chosen program, I understand that I should speak to the **UNM String Lab School** staff.

Knowing the risks and in consideration of being permitted to participate in the above named program, I do agree to assume all risks of personal injury or loss, bodily injury (including death), damage to or loss of, or destruction of any personal property resulting from or arising out of my child’s participation in the youth program. I also, hereby release, waive, indemnify, hold harmless and discharge UNM, its Board of Regents, its officers, employees or agents, from any and all claims, damages, and injuries arising out of my child’s activities, including the use of equipment and facilities provided by UNM.

I further understand that UNM does not provide health insurance for individuals participating in youth programs. As such, either I or my personal health insurance will be responsible for payment of medical services and care for any injuries sustained during the youth program.

By signing this form, I am stating that I have read this waiver and notice of risk, fully understand its terms and understand that it affects my legal rights and how it affects those legal rights. I am signing this waiver and notice of risk knowingly and voluntarily, and intend for it to be a complete and unconditional release of liability to the greatest extent of the law.

Print Participant’s Name Date

Print Parent/Legal Guardian’s Name Date Parent/Legal Guardian’s Signature