



# 2019-20

## UNM String Lab School Parent Handbook

Inside you will find:

Page 2	Communication and Contact Information
Page 3	Fall 2019 Dates
Page 4	Spring 2020 Dates
Page 5	Noon Recitals
Page 6	Concert Dates
Page 7	Practice Help Station
Page 7	Snack Bar
Page 8	UNM Facilities
Page 8	Parking
Page 9-10	Lesson Expectations in the String Lab School
Page 11	Lesson Etiquette 101—Electronic Device Flow Chart
Page 12	Supplemental Activities
Page 13	Fine Arts Center Map (upper level)
Page 14	Fine Arts Center Map (lower level)

Please fill out the last three pages and return to the Help Desk on the first day of classes! Once you have turned this in you will receive your parking pass.

Page 15	Photo Release
Page 17	Minors on Campus Emergency Contact Information
Page 18	Minors on Campus Participation Waiver



# Communication with the UNM String Lab School

## Email



Email is the primary form of communication from the UNM String Lab School. Please make sure that you are getting emails from us! Add UNM String Lab School to your contacts, so that emails don't end up in your spam folder without you ever seeing them. If you are using a gmail account, emails from us may end up in your Promotions or Updates tab. Right mouse-click the email to move it to your Primary tab, and say "Yes" when you are asked about all future emails. If you have any questions, please email our Program Coordinator, Laurie Lopez at [ljlopez@unm.edu](mailto:ljlopez@unm.edu).

## Bulletin Boards



Current information is posted on the bulletin boards. There is one upstairs on an easel in the lobby and one downstairs on the wall outside the String Pedagogy office. Check these regularly for updates and information!

## Practice Help Desk



The Doctor is In! Stop by the help desk in the Popejoy lobby on Saturdays between 9am and 11am to answer your questions and provide quick help for tuning, practice ideas, etc.

## Social Media

The String Lab School periodically posts fun photos and opportunities on its social media accounts. Please note that String Lab School information is usually emailed to you, and may not be posted on social media. Follow us to see the String Lab School in action!



Facebook: [facebook.com/unmstringlabschool/](https://facebook.com/unmstringlabschool/)



Instagram: [instagram.com/unmstringlabschool/](https://instagram.com/unmstringlabschool/)

## Website

Registration and general information is posted on our website [music.unm.edu/community/lab-school/](https://music.unm.edu/community/lab-school/)



## Phone

All of our interns, coordinators and directors teach classes, teach lessons, take classes and perform themselves. Because we spend most of our time out working, we are not often sitting in the office. We do check voice mail daily. To leave a voice mail for the UNM String Lab School, call (505) 277-1878.



## Inclement Weather or Campus Closures

It is rare that the UNM String Lab School has to cancel group classes due to inclement weather. In the event this occurs, or the UNM campus is closed for an emergency, an email will be sent to you, and messages posted on social media at least one hour before the start of class. For morning classes, we will ask KOB and KOAT to add us to their cancellation lists. Unfortunately the UNM String Lab School is unable to reschedule group classes; fortunately we live in a very temperate climate and this has only happened once in the last twenty years!





## UNM String Lab School Group Class Dates 2019-20

### String Lab School—Fall 2019 Group Class Dates

#### Fall 2019—Friday Classes

August 16—Friday classes begin  
August 23  
*August 30 no classes—  
Labor Day weekend*  
September 6  
September 13  
September 20  
September 27  
*October 4 no classes—  
optional Hummingbird retreat*  
*October 11 no classes—  
Fall Break*  
October 18  
October 25  
November 1  
November 8  
November 15  
November 22  
*November 29 no classes—  
Thanksgiving weekend*  
December 6—Sharing Concert

#### Fall 2019—Saturday Classes

August 17—Saturday classes begin  
August 24  
*August 31 no classes—  
Labor Day weekend*  
September 7  
September 14  
*Noon recital (Keller Hall)*  
September 21  
September 28  
*Noon recital (Keller Hall)*  
*October 5 no classes—  
optional Hummingbird retreat*  
*October 12 no classes—  
Fall Break*  
October 19  
October 26  
*Noon recital (Keller Hall)*  
November 2  
November 9  
*Noon recital (Keller Hall)*  
November 16  
*Noon recital (Keller Hall)*  
November 23  
*Noon recital (Keller Hall)*  
*November 30 no classes—  
Thanksgiving weekend*  
December 7—Sharing Concert

#### Fall 2019—Wednesday Classes

August 21—Wednesday classes begin  
August 28  
September 4  
September 11  
September 18  
September 25  
*October 2 no classes—  
optional Hummingbird retreat*  
*October 9 no classes—  
Fall Break*  
October 16  
October 23  
October 30  
November 6  
November 13  
November 20  
*November 27 no classes—  
Thanksgiving weekend*  
December 6—Sharing Concert (Fri)

**Monster Play-In**  
*at the noon recital*  
Saturday, October 26  
Noon in Keller Hall

### Fall 2019—Dates to Remember

#### Noon Recitals

*Group classes performing*  
September 14—Keller Hall  
*Mad About Music*  
September 28—Keller Hall  
*Cello Bk 1, Cello Bk 2*  
October 26—Keller Hall  
*Monster Play-In*

November 9—Keller Hall  
*Twinklers, Violin Box,  
Violin Bk 3, Violin Late Bk 1*  
November 16—Keller Hall  
*Violin Bk 2*  
November 23—Keller Hall  
*Violin Early Bk 1, Violin Bk 4*

#### Sharing Concerts

December 6—location tbd  
*(Wednesday & Friday classes)*  
December 7—Keller Hall  
*(Saturday classes)*

*Please note that group class noon recital performance dates are subject to change. Your group class teacher will notify you of changes, should there be any!*



## UNM String Lab School Group Class Dates 2019-20

### String Lab School—Spring 2020 Group Class Dates

#### Friday Classes

January 24—Friday classes begin  
 January 31  
 February 7  
 February 14  
 February 21  
 February 28  
 March 1—Gala Concert (Sun)  
 March 6  
 March 13  
     *March 20 no classes—  
     UNM Spring Break*  
 March 27  
     *April 3 no classes—  
     APS Spring Break*  
     *April 10 no classes—  
     APS Vernal Holiday*  
 April 17  
 April 24  
 May 1—Sharing Concert

#### Saturday Classes

January 25—Saturday classes begin  
     *Noon recital (Keller Hall)*  
 February 1  
 February 8  
     *Noon recital (Keller Hall)*  
 February 15  
 February 22  
     *Noon recital (Keller Hall)*  
 February 29  
 March 1—Gala Concert (Sun)  
 March 7  
     *Noon recital (B120)*  
 March 14  
     *March 21 no classes—  
     UNM Spring Break*  
 March 28  
     *April 4 no classes—  
     APS Spring Break*  
     *April 11 no classes—  
     APS Vernal Holiday*  
 April 18  
 April 25  
     *Noon recital (B120)*  
 May 2—Sharing Concert

#### Wednesday Classes

January 22—Wednesday classes begin  
 January 29  
 February 5  
 February 12  
 February 19  
 February 26  
 March 1—Gala Concert (Sun)  
 March 4  
 March 11  
     *March 18 no classes—  
     UNM Spring Break*  
 March 25  
     *April 1 no classes—  
     APS Spring Break*  
     *April 8 no classes—  
     APS Vernal Holiday*  
 April 15  
 April 22  
 April 29  
 May 1—Sharing Concert (Fri)

**String Lab School  
Gala Concert**  
*All String Lab School  
classes perform!*  
 Sunday, March 1  
 2pm, location tbd

### Spring 2020—Dates to Remember

#### Noon Recitals

*Group classes performing*  
 January 25—Keller Hall  
     *Mad About Music*  
 February 8—Keller Hall  
     *Violin Bk 4*  
 February 22—Keller  
     *Twinklers, Violin Box,  
     Violin Bk 2, Violin Bk 3,  
     Violin Late Bk 1*

March 7—B120  
     *Cello Bk 1, Cello Bk 2*  
 April 25—B120  
     *Violin Early Bk 1*

*Please note that group class noon  
 recital performance dates are subject  
 to change. Your group class teacher  
 will notify you of changes, should  
 there be any!*

#### Gala Concert

March 1—Continuing Ed 2pm  
     *All String Lab School Group Classes*

#### Sharing Concerts

May 1—Keller Hall  
     *Wednesday & Friday classes*  
 May 2—Keller Hall  
     *Saturday classes*

# Noon Recitals at the UNM String Lab School

## Why do group classes perform in noon recitals?

Performing in groups provides students with the opportunity to prepare and share their music-making with peers. Group playing is a beneficial way to learn ensemble skills. Listening to each other, staying together, matching tone and style, increasing attention and self-discipline are a few of these skills. These sorts of musical experiences pay off in the long run. Musicians who fiddle, play in orchestras, and chamber groups must possess these skills, developed to a higher level. Our group lessons and noon recitals hone those same skills, which can inspire and motivate children to push for personal improvement.

## Why attend a noon recital?

“Watching others perform is as valuable as performing.” This is a premise of any Suzuki program. Children learn patience, impulse control, respect for others and a desire to play well. Noon recitals are a great way to listen to other students play the Suzuki repertoire. Check out the dates listed in this calendar and attend as many as you can.



## Why stay for the whole recital?

As children learn to sit quietly and watch, they are learning impulse control and respect for others. At the same time, they are developing familiarity with the repertoire and a desire to learn it....more reasons for parents to arrange their schedules to remain at recitals until the last student has performed!

## Why perform individually in a noon recital?

When students walk onto stage for their first “solo” they feel the support of the recital hosts, their private teacher, their peers and their parents. The audience is there to celebrate the efforts of the soloist – not to judge the outcomes. Sharing music is a natural progression from lessons and gives teachers and students an opportunity for self-reflection, evaluation and most importantly, links process to product.

## Noon Recital Schedule

### Fall 2019

Group classes performing  
September 14—Keller Hall  
*Mad About Music*  
September 28—Keller Hall  
*Cello Bk 1, Cello Bk 2*  
October 6—Keller Hall  
*Violin Box, Violin Early Bk 1,  
Violin Late Bk 1, Violin Bk 2*  
October 26—Keller Hall  
*Monster Play-In*  
November 9—Keller Hall  
*Twinklers, Violin Box,  
Violin Bk 3, Violin Late Bk 1*  
November 16—Keller Hall  
*Violin Bk 2*  
November 23—Keller Hall  
*Violin Early Bk 1, Violin Bk 4*

### Spring 2020

Group classes performing  
January 25—Keller Hall  
*Mad About Music*  
February 8—Keller Hall  
*Violin Bk 4*  
February 22—Keller Hall  
*Twinklers, Violin Box,  
Violin Bk 3, Violin Late Bk 1,  
Violin Bk 2*  
March 7—B120  
*Cello Bk 1, Cello Bk 2*  
April 25—B120  
*Violin Early Bk 1*

*Please note that group class noon recital performance dates are subject to change. Your group class teacher will notify you of changes, should there be any!*

## How do I sign my child up to play in a noon recital?

Your child’s private teacher will help you choose a date, a polished piece to perform and will sign you up for the recital as well as a rehearsal slot with our collaborative pianist, Craig Brown, on the morning of the performance.

# Special Concerts at the UNM String Lab School

Come in costume (no masks, please!) for a Suzuki play-in at the String Lab School! We start with the more advanced pieces and stair-step down to Twinkle.

By the end of the concert, all of our String Lab School musicians are together on stage to play Pumpkin on a Fence Post.

**Monster Play-In**  
*at the noon recital*  
**Saturday, October 26**  
**Noon in Keller Hall**

**String Lab School  
Gala Concert**  
*All String Lab School  
classes perform!*  
**Sunday, March 1**  
**2pm, location TBD**

Invite your grandparents, friends and neighbors to celebrate all the things your musician is learning at the UNM String Lab School. Come dressed up for a special afternoon of music as each class performs on stage.

At the end of each semester, classes share what they have been learning with other classes. Seeing what the next class is performing can be very motivational for young musicians.

**Sharing Concerts**

<b>Fall 2019</b>	<b>Spring 2020</b>
<i>Wednesday &amp; Friday classes</i>	<i>Wednesday &amp; Friday classes</i>
<b>Friday, December 6</b>	<b>Friday, May 1</b>
<b>4:30pm location tbd</b>	<b>4:30pm in Keller Hall</b>
<i>Saturday classes</i>	<i>Saturday classes</i>
<b>Saturday, December 7</b>	<b>Saturday, May 2</b>
<b>9am in Keller Hall</b>	<b>9am in Keller Hall</b>

**Please note that performance times are listed. Performers will be given an earlier call time that allows time for unpacking, tuning, warming up, etc.**

# Practice Help Desk



The Practice Help Desk is your one-stop shop for information about the UNM String Lab School! The Help Desk pops up in the lobby of Popejoy from 9-11 a.m. every Saturday the String Lab School is in session. Our program coordinator, Laurie Lopez, is available to help you navigate the String Lab School, lessons, and practice at home.

The Help Station is a little busy around the change of classes. If you need a mini tutorial or instrument help, please plan to come to the station when classes are in session and the lobby is quieter.

This is a resource just for you, so take advantage! Stop by, say hi, and get all your questions answered. What kinds of things do parents stop and ask for help with at the desk? Below is a small sample:

## Questions about:

- parking passes
- tuition
- payments
- scheduling
- noon recitals
- private teachers
- which class is next
- where your class meets
- concert information
- and more!

## Help with:

- tuning
- sizing of instruments
- restringing
- setting a shoulder rest
- finger tapes
- practice strategies
- lesson etiquette
- and more!

## Mini tutorials on:

- bow holds
- posture
- playing position
- left hand position
- set, touch, release
- elbow swings
- and more!

**P.S. No need to bring 5¢  
— this advice is free!**

---

## Snack Bar

Mad About Music runs a snack bar most Saturdays that the UNM String Lab School is in session. Stop by for a treat and a cup of coffee before or after class! There is juice, coffee, water, tea, hot chocolate, donuts, granola bars, trail mix, bananas, bagels and other goodies available.

Most items in the snack bar are \$1. Although the Snack Bar is unable to process credit cards, Punch Cards are available to make your Saturdays easier—purchase a card for \$10, and your card is available at the snack bar for 10 punches. No need to remember cash every week.

The Snack Bar may have other items for sale such as tote bags, practice kits, tshirts and ornaments.

# UNM String Lab School Facilities

The UNM String Lab School uses classrooms and recital halls that belong to the University of New Mexico. As such, university policies apply.

- No use of wheels (bikes, scooters, skateboards, rollerblades/skates, heeies, etc) allowed in the building
- No shouting, running, playing tag, catch, or disruptive games in the building
- No smoking on the university campus

Other activities and classes are taking place in the building, so we are asked to be respectful. Please clean up after yourselves and your children in classrooms and sitting areas. Remove trash, erase chalkboard doodlings, and return chairs to original seating as appropriate. We don't want teachers and parents in the next class to have to clean up after you! If there is a spill, please clean it up.

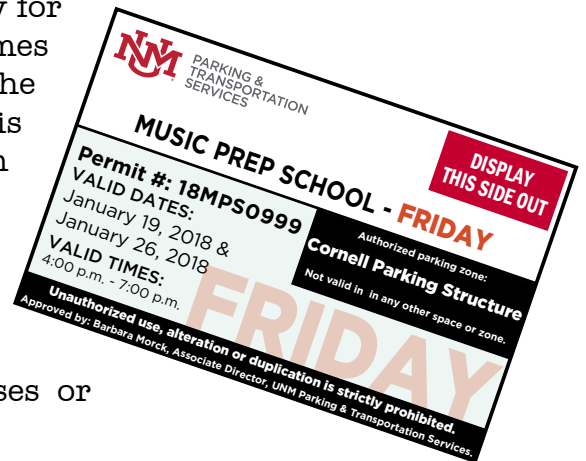
Restrooms should also be left in good condition. The building is public, so please be aware that there may be other people in the building. If restrooms need attention, please let the String Lab School know so we can call a custodian.

Because the building is public, it is recommended that you stay with your child in the building, just to be safe.

---

## Parking at the UNM String Lab School

Friday or Saturday classes include one permit per family for the UNM Cornell parking structure. The dates and times for each pass will be listed on it. A pass will be given for the fall semester and a new one for the spring semester. This pass must be displayed on your dashboard if you park in the structure. Temporary passes good for the first two sessions will be emailed to you. Permanent passes will be given out during the first two weeks of classes, in exchange for your completed photo release, minors on campus emergency contact form and minors on campus participant waiver. A limited quantity of second passes or replacement passes are available for \$10 each.





# Expectations for String Lab School Lessons

## A. Parents and String Lab School Children

1. Because we are working with children in a very focused situation, private lessons are defined as follows:
  - a. Beginning lesson.....any length, not exceeding 30 minutes
  - b. Intermediate lesson.....any length, not exceeding 45 minutes
  - c. Advanced lesson.....any length, not exceeding 60 minutes
2. Please be punctual to all private lessons! UNM intern teachers are very busy and cannot be expected to give you extra time if you are late. Also, except in extreme emergencies, you are expected to attend all scheduled lessons. Lessons cancelled without 24- hour notice may be forfeited. Make up lessons will only be given if the miss was unavoidable—illness or emergency—and are scheduled within the current semester. If you have questions, please contact Laurie Lopez (ljlopez@unm.edu).
3. Before your child's private or lesson:
  - a. Review the week's assignments and the weekly preparations so your child feels confident going into the lesson.
  - b. See that your child has had a brief rest and a snack.
  - c. Make sure your child has gone to the bathroom, trimmed nails and washed hands.
4. The care and maintenance of the instruments and/or box and stick are your responsibility. Damage to either UNM instruments/boxes, or rented instruments can be costly and time consuming to repair.

Your UNM intern teacher will advise you when new strings, bow hair, etc., are needed. These are your responsibility and should be taken care of within the week. Robertson's Violin Shop on Carlisle is the best resource.
5. Parents must be present at all private lessons. No exceptions!
6. Parents are not required to attend group lessons, but are encouraged to attend. If you do not attend, please make arrangements with another parent to take your child to the bathroom, should the need arise. Children may not go to the bathroom alone, nor can String Lab School staff leave their duties to take your child. Please be very prompt in picking your child up at the end of class.
7. Parent's full attention will be required for each private lesson. Siblings must be quiet and unobtrusive during all lessons—both private and group. If they must attend, please bring appropriate quiet activities for them.
8. If you have to discuss something with your UNM intern teacher, do not wait until the end of the private lesson to bring it up, or the lesson following yours will be delayed.
9. Criticism of your child or the intern is not appropriate during lessons; please arrange a time to call, or email your intern to discuss problems at a separate time. In case of real difficulties, please contact Laurie Lopez (ljlopez@unm.edu).

Continued

# Expectations for String Lab School Lessons

## A. Parents and String Lab School Children....continued

10. UNM interns are college students who have spent at least one year in the classroom preparing to teach your child. Lessons, both private and group, are under the supervision of the UNM pedagogy faculty, via lesson notes, videos and discussion in pedagogy classes. Your child's lesson may be videotaped as part of this process, but will only be shared with pedagogy faculty and will be deleted at the end of the semester.

11. All private lessons will be given on the UNM campus. No exceptions!

## B. UNM Intern Teacher

1. Interns will be prompt for all scheduled lessons. Their instrument will be tuned, notes and materials will be ready and available and video equipment will be set up, cued, and ready to go before the lesson begins.

2. Interns must give 24 hours notice of changing or cancellation of any private lessons given in the UNM String Lab School. Emergencies will be handled on an individual basis, but with cell phones and email, interns and students should rarely, if ever, not show up to a scheduled lesson!

3. Intern teachers who miss more than one private lesson, are late to more than one lesson without a valid excuse, or are unprepared to teach your child, should be reported to Laurie Lopez (ljlopez@unm.edu). Interns receive grades which reflect their ability to arrive on time and be prepared for each lesson they teach.

4. Regular videos of private lessons will be required each semester. Video consultations are held each semester. Particulars on this assignment will be handed out in class. Cameras are available in the Pedagogy Room [B123] and can be checked out for this use. Lesson videotaped as part of this process will only be shared with pedagogy faculty and will be deleted at the end of the semester.

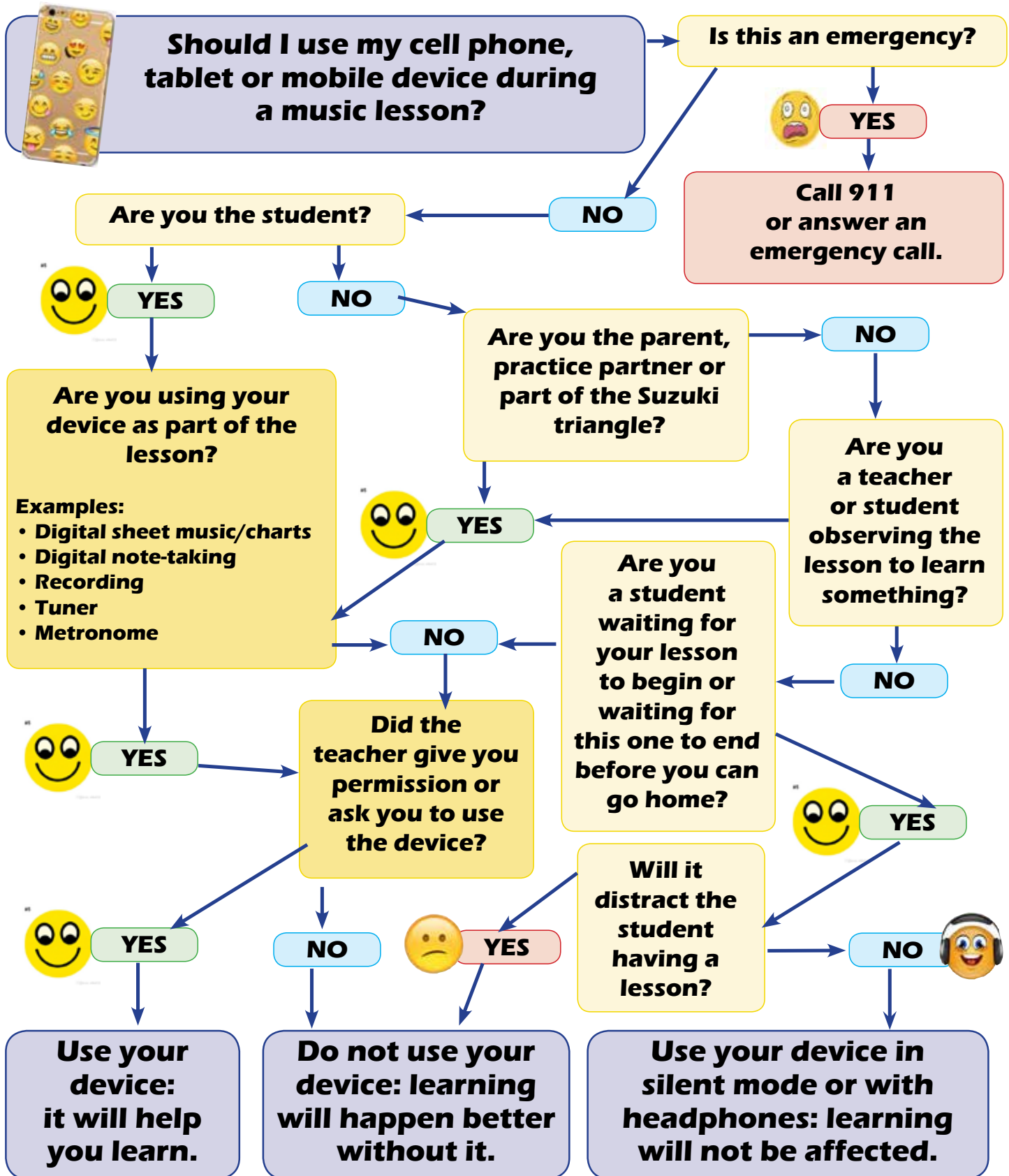
5. At the end of each semester, interns will fill out the short section on the UNM String Lab School Tracking Form for each of his/her String Lab School students.

6. Interns will teach in group and private lessons as assigned and will assist in all performances and/or activities of the UNM String Lab School Program.

7. All private lessons will be given on the UNM campus. No exceptions!



# UNM String Lab School Lesson Etiquette 101



# Supplemental Activities for Young Musicians

**There are lots of opportunities to listen to great music performed by professional musicians in Albuquerque and Santa Fe.**

## **New Mexico Philharmonic**

The professional symphony for the Albuquerque area plays several concert series throughout the year, from classical concerts, rock and pops concerts, neighborhood concerts to zoo concerts—concerts and tickets are available on their website, nmphil.org. Look for the NM Phil's SoundCard. Students can get a season pass for only \$30!

## **Santa Fe Symphony**

The Santa Fe Symphony performs in the historic Lescic Theater in Santa Fe. Concerts and tickets are available on their website, santafesymphony.org.

## **Albuquerque Philharmonic**

The Philharmonic brings together accomplished musicians with a passion for classical music to play great works of art at no expense to our audience. The Albuquerque Philharmonic is for every one; all ages, socioeconomic statuses. Concerts and information are available on their website, abqphilharmonic.org

## **Chatter**

Chatter weaves together traditional and contemporary chamber music in programs on Sunday mornings that include a reading by a poet/speaker of the morning and a two-minute celebration of silence. Tickets are only \$5 for kids under 13. Information and tickets are available on their website, chatterabq.org.

## **Albuquerque Chamber Soloists**

Albuquerque Chamber Soloists showcases the talents of outstanding New Mexico musicians, many of whom are members of New Mexico's leading orchestras and academic institutions. Albuquerque Chamber Soloists fosters unique programmatic adventures, often incorporating rare and bold programming with the time-honored masterpieces of the chamber music repertoire. Concerts and tickets are available on their website, abqcs.com.

## **Musicals and operas**

You can often see musicians in action in Broadway productions, musicals, and operas in the area. Websites for more information:

landmarkmusicals.org  
musicaltheatresw.com  
popejoypresents.com  
operasouthwest.org  
santafeopera.org

## **Performances at UNM**

There are lots of opportunities to listen to musical performances at UNM. Performance professors have their studios perform, each pedagogy student has a senior recital, the UNM orchestra and ensembles perform regularly, as well as guest artists. [finearts.unm.edu/events/](http://finearts.unm.edu/events/)

## **Performances by String Lab School Interns and Coordinators**

You can see our own coordinators and interns in action in the various ensembles already listed, as well as in local bands:

@TylorBrandonBand (Facebook page)

[lechatlunatique.com](http://lechatlunatique.com)



**If you would like your child to be involved in other musical groups, there are several to choose from!**

## **Fiddling at the UNM String Lab School**

Emily Anslover, four-time state fiddle champion, teaches Beginning and Advanced Fiddling through the UNM String Lab School on Wednesday evenings for students who are in Late Book One and up. All stringed instruments are welcome!

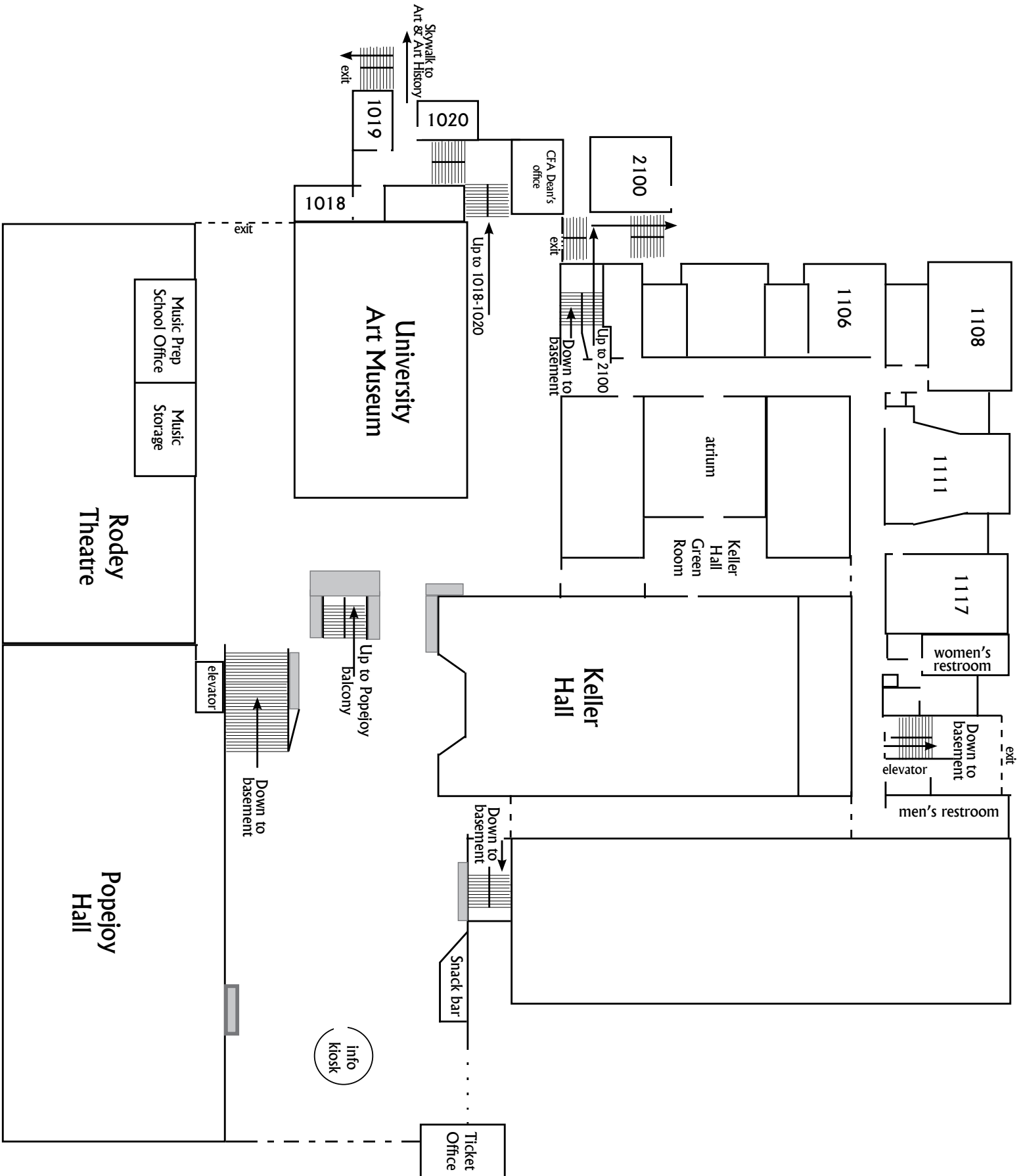
## **Amigos Musicales**

Amigos Musicales is a one-week summer chamber music program for more advanced students of middle school and high school age from the Albuquerque area. Several local studio and school orchestra teachers collaborate with Anne Karlstrom to coach student string quartets. The quartets rehearse daily for a week and put on a concert at the end. [albuquerque-suzuki-violin.com](http://albuquerque-suzuki-violin.com)

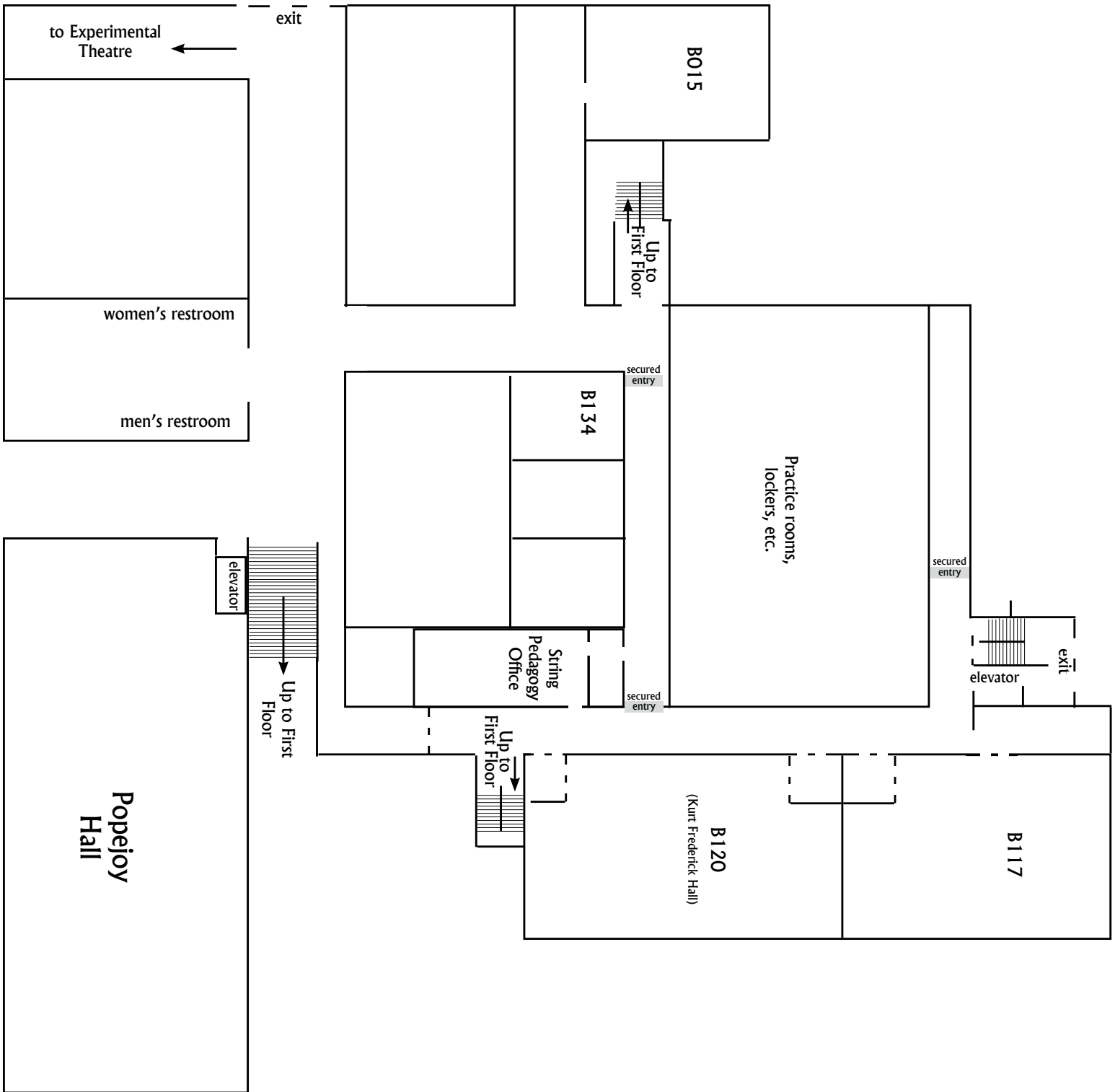
## **Albuquerque Suzuki Retreat at Hummingbird**

In October, Albuquerque area violin, viola, cello and bass students of all ages can spend a day or overnight (for ages 8+) at Hummingbird Music Camp. Group activities, musical instruction and mini concerts make a fun getaway musical adventure. For more information, contact [albuquerque-suzuki-school@gmail.com](mailto:albuquerque-suzuki-school@gmail.com).

# Ground floor of the Fine Arts Center at UNM



# Basement floor of the Fine Arts Center at UNM



## UNLIMITED IMAGE RELEASE AGREEMENT

### GRANT

For consideration which I acknowledge, I irrevocably grant to the Regents of the University of New Mexico (UNM) acting through its Lab School and UNM's assigns, licensees, and successors, ("UNM") the right to use images taken of me or my children in all forms and media including composites or modified representations for educational purposes, including web sites. I will make no monetary or other claim against UNM for the use of said images or videos, and I acknowledge the University's right to crop or treat the images or video at its discretion. I also understand that once my image or images of my children are posted to afore mentioned websites or publications, any computer user on or off campus can download the images or video.

I hereby waive any right to inspect or approve the finished images, video, publications, or electronic matter that may be used in conjunction with them now or in the future, whether that use is known to me or unknown.

### RELEASE

I release UNM and UNM's assigns, licensees and successors from any claims that may arise regarding the use of my image or images of my children, including any claims of defamation, invasion of privacy, infringement of moral rights, rights of publicity or copyright. UNM is not permitted to include my name or my children's names as a credit in connection with the image.

UNM is not obligated to utilize any of the rights granted in this Agreement.

I have read this release before signing below and I fully understand the contents, meaning and impact of this release and I am over the age of 18.

I understand that I am free to address my specific questions regarding this release by submitting those questions in writing prior to signing and I agree that my failure to do so will be interpreted as a free and knowledgeable acceptance of the terms of this release.

Child(ren)'s Name(s): \_\_\_\_\_ Date: \_\_\_\_\_

**If you do NOT consent to the terms herein, put an "X" instead of your signature. Please provide an email & phone number.**

### Parent/Guardian Consent (included if the person is under the age of 18)

I am the parent or guardian of the minor named above. I have the legal right to consent to and do consent to the terms and conditions of the model release.

Parent/Guardian Name (print): \_\_\_\_\_ Date: \_\_\_\_\_

Parent/Guardian Signature: \_\_\_\_\_

Parent/Guardian Email & Phone #s: \_\_\_\_\_

## MINOR PARTICIPANT EMERGENCY CONTACT AND MEDICAL RELEASE FORM

**Name of Minor Participant:** \_\_\_\_\_ **Date of Birth:** \_\_\_\_\_

**Name of Parent or Legal Guardian:** \_\_\_\_\_

**Address:** \_\_\_\_\_  
*Street Address*
*City*
*State*
*Zip*

**Home phone:** \_\_\_\_\_ **Business Phone:** \_\_\_\_\_ **Cell Phone:** \_\_\_\_\_

**Emergency Contacts/Authorized Pick-Ups: (required)**

Please list other possible individuals who may be contacted in case of emergency if you are not available, and whether or not they are authorized to pick up the minor. Please note, any person not listed below WILL NOT be permitted to pick up the minor without written permission from a parent or legal guardian.

Name	Phone	Pick-Up?	Relationship to Minor
1.		YES / NO	
2.		YES / NO	
3.		YES / NO	

**Medical Conditions/Allergies: (required)**

If the minor has any condition that may require special treatment it is imperative that a medical provider is alerted. Please indicate below any on-going medical or emotional problems that may require special attention (e.g., epilepsy, allergies, asthma, disability, anxiety, depression, etc.) including medications currently taken. Use reverse side if necessary.

<b>Medical Condition(s):</b>	<b>Medication/Dosage:</b>	<b>With Minor?</b>
		YES / NO
		YES / NO
		YES / NO
<b>Allergies:</b>	<b>Describe reaction:</b>	<b>Severity?</b>
		LOW/MED/HIGH
		LOW/MED/HIGH

**Primary Care Physician's Name:** \_\_\_\_\_ **Phone:** \_\_\_\_\_

**Health Insurance Company Name:** \_\_\_\_\_ **Policy Number:** \_\_\_\_\_

I verify that all the information provided is correct and complete. I realize that participation involves an inherent potential risk. In the event of an emergency, I authorize the University of New Mexico ("UNM") and its agents or representatives to make arrangements as reasonably necessary to ensure my child's welfare. In the event of an emergency, permission is granted to UNM to authorize emergency transportation, emergency medical care and/or treatments and hospital care for the minor. I agree to be responsible for all necessary charges incurred by any hospitalization or treatment rendered pursuant to this authorization.

\_\_\_\_\_  
Signature of Parent/Legal Guardian

\_\_\_\_\_  
Print Parent/Legal Guardian Name

\_\_\_\_\_  
Date



## MINOR PARTICIPANT WAIVER AND NOTICE OF RISK

<b>Program Name:</b>	<b>UNM String Lab School</b>
<b>Start &amp; End Dates</b>	<b>8/16/19-5/9/19</b>
<b>Participant's Name</b>	
<b>Parent or Legal Guardian Name</b>	

The University of New Mexico (“UNM”) offers youth programs through the **UNM String Lab School**. A description of all youth programs, including the Participant’s chosen program is available online at [music.unm.edu/community/lab-school/](http://music.unm.edu/community/lab-school/).

As Participant’s parent or legal guardian, I understand and acknowledge that certain risks are inherent to participating in recreational activities and youth programs, due to one’s own actions, the actions of others or a combination of both. These risks may result in injury, minor or serious, as well as damage to personal property. If I have any specific questions about Participant’s safety or the risks associated with Participant’s chosen program, I understand that I should speak to the **UNM String Lab School** staff.

Knowing the risks and in consideration of being permitted to participate in the above named program, I do agree to assume all risks of personal injury or loss, bodily injury (including death), damage to or loss of, or destruction of any personal property resulting from or arising out of my child’s participation in the youth program. I also, hereby release, waive, indemnify, hold harmless and discharge UNM, its Board of Regents, its officers, employees or agents, from any and all claims, damages, and injuries arising out of my child’s activities, including the use of equipment and facilities provided by UNM.

I further understand that UNM does not provide health insurance for individuals participating in youth programs. As such, either I or my personal health insurance will be responsible for payment of medical services and care for any injuries sustained during the youth program.

By signing this form, I am stating that I have read this waiver and notice of risk, fully understand its terms and understand that it affects my legal rights and how it affects those legal rights. I am signing this waiver and notice of risk knowingly and voluntarily, and intend for it to be a complete and unconditional release of liability to the greatest extent of the law.

---

Print Participant’s Name Date

---

Print Parent/Legal Guardian’s Name Parent/Legal Guardian’s Signature Date